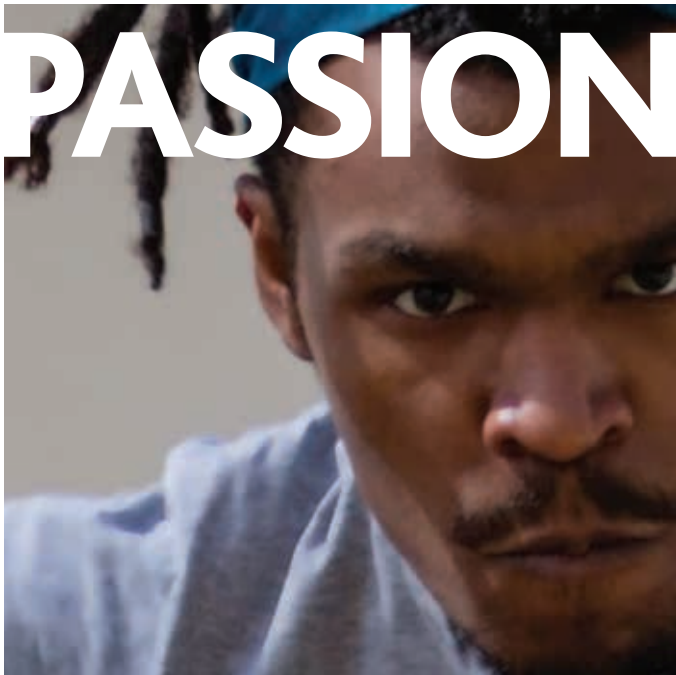


# FOCUS YOUR PASSION



Exploring ideas. Expanding specialist knowledge.  
Building career prospects or following your  
passion. There are so many reasons to embark on  
postgraduate study. Whatever your ambition, we're  
here to champion it – with academic guidance,  
career-focused support and an inspiring setting.

Where should you study? What should you  
study? And what makes Bath Spa different  
from all the rest? Choosing the right university  
for postgraduate study is a major decision.  
There are many things to consider. So, in the  
following pages, we'll cover all of the  
essentials. We'll paint a picture of scholarly  
(and social) life at Bath Spa – from the course  
pathways and career-focused support we offer  
to the tutors and facilities. If it's not covered  
in here, you'll find plenty of useful information  
on our website: [www.bathspa.ac.uk](http://www.bathspa.ac.uk)

- 02 Why choose postgraduate study
- 04 Why choose Bath Spa University
- 08 Our campuses
- 10 Bath
- 14 Our community
- 16 Careers
- 18 Facilities
- 20 Fees and funding
- 22 International students
- 24 Research Degrees
  
- 27 Courses by subject area
  - 29 Art and Design
  - 37 Education
  - 47 Writing and English
  - 55 Music
  - 63 Film and Media
  - 64 Performing Arts and Dance
  - 71 Computing
  - 72 Heritage
  - 73 Business and Management
  - 77 Psychology
  - 78 Environment
- 80 Visit us

A full-page portrait of a man with dark skin and long, dark dreadlocks. He is wearing a bright blue headband and a light grey t-shirt. The t-shirt features a large, stylized graphic of a tiger's face in maroon and white. He is looking directly at the camera with a serious, intense expression. His right arm is extended forward, with his hand clenched into a fist. The background is a plain, light-colored wall.

**PASSION**

# A big step. A giant leap.

Opening doors and opening minds. Broadening horizons or boosting earnings potential. Postgraduate study can unlock a world of opportunities – and give you the time and space to pursue your passion.



Explore  
[www.bathspa.ac.uk/postgraduate](http://www.bathspa.ac.uk/postgraduate)

## Go deeper

Stoke your curiosity. Answer burning questions. If you feel you'd like to go further and think deeper, postgraduate study gives you that opportunity. You'll be able to challenge yourself and focus on subjects that really fascinate you – alongside a community of inquisitive, like-minded students.

## Invest in your future

Completing a Master's could mean you earn more in your chosen career. In fact, research by the Sutton Trust suggests postgraduates can earn £200,000 more than graduates across their working lives. And the Department for Education has found that in 2017, postgraduates earned on average £6,000 more than undergraduates.\*\* Plus, a postgraduate degree on your CV can help you stand out in a competitive job market.

## Ground-breakers and trailblazers

Publishers and performers, filmmakers and entrepreneurs, classroom pioneers and business leaders. Through postgraduate study you'll build connections with some of the brightest minds – both in the seminar room or studio and outside, through networking events and industry links.

## A career path

Perhaps you've got your sights set on a dream career? Or maybe you're at a crossroads, looking for a fresh direction? Either way, many postgraduates choose their degree to gain the specialist skills and professional qualifications needed for a specific role.

## Specialist knowledge

Hone your research skills. Work alongside leading academics. Make a mark in your field of study. There's no doubt postgraduate study expands your mind and deepens your knowledge of a subject. And, for some, it's a springboard to a career in academia.

The Department for Education has found that postgraduates' salaries are higher in all subject areas compared with undergraduates, and on average postgraduates earned £6,000 more.\*\*

\*\* Graduate Labour Market Statistics 2017, Department for Education.







"The biggest highlight was having the opportunity to take the topic I was interested in and study it in depth. It ignited a passion for study and my time at Bath Spa gave me a solid foundation to pursue further research. It has also opened up other career avenues such as lecturing, training and research which I had not considered before commencing the course."

Ruth Smith, MA Counselling  
and Psychotherapy Practice



94% of Bath Spa University  
postgraduates\* go on to  
professional and managerial work,  
or higher level further study, six  
months after graduating

\*Based on UK domiciled graduates from postgraduate degree programmes that responded to the Destination of Leavers from Higher Education (DLHE) survey for 2016/17 leavers. HESA 2018

# Why choose us?

## A long history of success

Bath Spa University was established as a modern, innovative university in 2005. But our roots can be traced back over 160 years to Bath School of Art. We have a strong (and growing) reputation that encompasses our four schools: the Bath School of Art and Design, Institute for Education, the College of Liberal Arts, and Bath Business School.

## A highly rated university for creative scene

We were delighted to be voted a highly rated university in the Which? University Student Survey for Creative Scene in 2018.

## Tailored study

Put simply, postgraduate study is about pursuing your passion. Whether that's in the arts, humanities, education, social sciences or business, you can develop your specialism with a broad range of courses that give you the freedom to follow your own path.

## Talented teachers

Engaging. Inspiring. Approachable. Responsive. We're proud to have talented teachers and practitioners who live and breathe their field of study. They bring direct industry experience to their teaching, most are involved in research and many are renowned in their respective fields.

"I chose Bath Spa because I specifically wanted support in developing my practice of composing using verbal scores and an environment that would support a fairly self-directed study where disciplinary boundaries could be fluid."  
Alex Mah, MRes Composition

"There are so many inspirational experts leading and teaching within this department, who I know I will gain professional advice and specific guidance from."  
Zsafia Szucs, MA Sound Art





# Modern, specialist facilities

Inspiring, fresh-faced buildings. Vibrant collaborative spaces. Well-stocked libraries and state-of-the-art technology. You'll have access to everything you could possibly need to study at the highest level. Plus, our campuses include great places to eat and drink, sports pitches, a gym, performance spaces and a brand new state-of-the-art creative campus for 2019.

# Strong focus on careers

Six months after graduating, 94% of our postgraduates are in work or further study (Destination of Leavers Survey, 2016/17). And it doesn't happen by chance. We have a strong focus on careers and close relationships with many local, national and international employers. Whether you want to join an established business, set up on your own or take your learning further, we'll give you the guidance and networks you need to make it happen.



# A happy, caring community

What's the secret to happiness? Friendship and activities? Creativity and culture? Nature or nurture? You'll find it all at Bath Spa University. Compared to some of the huge institutions, we're small – small enough to be able to focus on every one of our students. At the same time, we're large enough to have a thriving community with lots going on. And there's a strong student support network to help you get the most out of your time.

# International outlook

We're part of a global community and our people are global citizens. It means we're continually reaching out and forging links with organisations around the world. At the same time, we welcome international students from across the globe, showing them what makes Bath so special.

# Outstanding location

Period buildings and rolling parkland, cutting-edge creative spaces and independent shops. Bath might hold UNESCO heritage status, yet it's anything but stuck in the past. This is a contemporary, dynamic, intimate city – small but perfectly formed.

# Safe and secure

As well as centuries-old architecture, a welcoming reputation and a lively creative scene, Bath is renowned for being a safe place to live. In fact, it's ranked as one of the top 'safe student cities' according to the Complete University Guide. Coupled with beautiful campuses, it's an environment that lets you relax and focus on your studies.















# Make yourself at home



Explore  
[www.bathspa.ac.uk/campuses](http://www.bathspa.ac.uk/campuses)





Dotted across the city yet on the cusp of the countryside, our campuses provide an inspiring setting for postgraduate study. You'll find centuries-old architecture alongside contemporary creative spaces, walled gardens and wide-open fields. These are places where imaginations have room to grow and bright minds can flourish.

#### Corsham Court

There's nowhere quite like Corsham Court. A 16th-century building set in a Capability Brown landscape, it has period drama charm. But step inside and you'll discover state-of-the-art facilities. With studios, seminar rooms, study and breakout spaces, a performance hall and an open access computer hub – not to mention a café and common room for meeting fellow students – it's the ideal centre for postgraduate teaching and research.

#### Newton Park

Newton Park has everything you'd want in a modern university: cleverly designed study spaces, group working rooms, film and television studios, publishing labs, a concert hall and even an amphitheatre. But this is a campus with a surprise or two up its sleeve. In the grounds you'll find a 14th-century Castle Tower and Castle Gatehouse. And you could take time out by the lake, woodland or nature reserve. Just a short bus ride from central Bath, this is a bustling parkland campus with plenty of space to stretch yourself.

#### Sion Hill

The Bath School of Art and Design is based at our Sion Hill campus in the heart of the city's elegant Georgian terraces. It puts incredible facilities at your fingertips, with studios and workshops for graphics, electronic media, art, photography, textiles, sculpture, wood, etching, lithography... the list goes on. But while it's a hive of activity and just a short stroll to the centre of Bath, this is a peaceful, picture-perfect campus. You'll study in landscaped gardens, surrounded by listed buildings and leafy avenues.

#### Locksbrook Road

2019 sees the grand opening of our brand new Art and Design building alongside the river Avon in Bath. This Grade-II listed former factory is being transformed from an iconic industrial space into a one-of-a-kind new building for the Bath School of Art and Design. It puts you close to the canal-side cycle path, walking distance to the city centre and within easy reach of popular student residential areas.

#### Our shared world

You won't fail to notice Bath Spa's commitment to our natural environment. We put it at the heart of all we do, from minimising the carbon footprint of our buildings, to cutting waste through the removal of disposable plastic cups in our refectories and coffee shops. Our efforts to minimise waste in Bath itself were recognised in the 2018 'Green Gown' Awards for Universities who excel at environmental practice.



#### Explore

Learn more about how we're caring for the environment at: [www.bathspa.ac.uk/green-focus](http://www.bathspa.ac.uk/green-focus)





# Jump right in

Bath offers the best of all worlds. It's not too big and not too small. It's on-the-go, exciting and energetic, yet easy to explore. Plus you're right on the fringes of rolling Cotswold countryside. It's no wonder so many people love it here – and so many students stay.

## More than a UNESCO World Heritage Site

Bath is one of the world's most beautiful, historic cities. It's home to famous sites such as the Roman Baths, Royal Crescent, Circus, Abbey and Pulteney Bridge. But look closer and you'll see there's much more to it than the tourist magnets.

## By day and by night

Alongside the golden Georgian buildings are independent shops, cosy pubs and cool cafés, trendsetting restaurants and quaint tea rooms. As for nightlife, you'll find cocktail bars, nightclubs, cinemas, the famous Theatre Royal and a lively comedy scene. And there's no shortage of live music either, with regular sessions at bars and clubs. If you ever need a change, Bristol is just a 15-minute train ride away – with its galleries, music venues, eclectic restaurants and street art scene.

## Festivals and sports

This is a city known and loved for festivals and the arts. From Shakespeare to Jane Austen, children's literature to avant-garde film – not to mention nearby Glastonbury – there's something for every interest. There's also a thriving sports scene with Bath Rugby's international stars, Bath City Football Club and Bath Races.

## A creative hub

Perhaps there's something in the air (or maybe the waters), but Bath is renowned for attracting world-class talent in the creative, design and technology sector. The city is a hotbed of inventors, entrepreneurs, artisans and independent thinkers. And the South West is renowned as home to cutting-edge creatives – from Aardman to Banksy, Dyson to Clarks.

## Corsham

Just ten miles from Bath, Corsham is a beautiful market town and home to our postgraduate centre, Corsham Court – and its Fine Art Collection. Here, peacocks wander down the high street that's a beautiful jumble of 16th-, 17th-, and 18th-century buildings. Weekly markets give you a flavour of the region's delicious produce. And thriving festivals offer a taste of village life.







100

students and staff participated in the Bath Festival in 2018



Bath is one of the safest student cities in the UK according to research by the Complete University Guide in 2017



Explore [www.visitbath.co.uk](http://www.visitbath.co.uk)









Fashion

1963—2013

50



# A happy, caring community



Whether you're full- or part-time, a mature or overseas student, we're here to help you make the absolute most of your postgraduate experience – from practical support to sports, and social events to professional advice.

Balancing your study, work and social life. Managing finances and family commitments. Being a postgraduate student can feel a little like a juggling act and, from time to time, you may find you need some support. We're here to listen and offer advice on all sorts of issues, including relationship difficulties, health concerns and loneliness.



**Money advice**

Postgraduate funding is a bit of a maze. But we can guide you through the intricacies of it all – loans, specialist scholarships, what you're entitled to and how to manage debt. You can find further information on page 20.

**Disability and accessibility**

Our specialist team gives information, advice and guidance to our students with a disability, including those with a specific learning difficulty (dyslexia, dyspraxia, AD(H)D), on the autism spectrum, with mental health or medical conditions, or with sensory or mobility impairments.

**Mental health and wellbeing**

As a Bath Spa student, you're never alone. There's a whole team of people to help you cope with the demands of postgraduate study, and look after your emotional and mental health.

**Medical service**

You can access a wide range of medical services at the daily surgeries on our Newton Park campus. Or, you could opt for the main practice in town.

**Faith services**

We welcome postgraduate students of every faith. Each week, members of the University Chaplaincy hold a drop-in session on our Newton Park campus. And keep a look out for seasonal events that take place year-round.

**Childcare**

If you have a child under five, we offer professional childcare at Oak Tree Day Nursery. Located on our Newton Park campus, children of Bath Spa students, staff and local parents play together in a safe, happy environment.



Explore  
[www.bathspa.ac.uk/student-support](http://www.bathspa.ac.uk/student-support)





Run by elected students, for all students, the Students' Union is a free to enrol charity with 8,000+ members.

Ryan Lucas, President of the Students' Union, explains:

Who runs the Union?

We have four full-time sabbatical officers and four part-time officers – who are supported by volunteers and staff.

What do we do?

Put simply we're your representatives at Bath Spa. For postgraduate students, you'll have course reps who voice the opinions of the student body and issues related to your course. You'll also have a postgraduate rep who takes specific postgraduate issues to higher level meetings. As an independent body, our Advice Centre also offers support and guidance on anything postgraduate-related.

How can you get involved?

We're on the lookout for postgraduates to lead workshops, lectures and research roundtables for our many societies. And remember, you can always start your own group. There are also more than 20 sports societies to choose from, plus 12 teams competing in the BUCS (British University and College Sport) league.

What are the SU facilities?

Our Newton Park Students' Union bar is the place to head for grab-and-go food – or to enjoy drinks with friends, day and night. It hosts live music, stand-up comedy and poetry evenings too, so there's always something happening. There's also the gym and Union Shop for essentials – with all profits going back into making your Union even better.



Explore [www.bathspasu.co.uk](http://www.bathspasu.co.uk) or contact us at [bathspasu@bathspa.ac.uk](mailto:bathspasu@bathspa.ac.uk) to find out more.





Explore  
[www.bathspa.ac.uk/careers](http://www.bathspa.ac.uk/careers)

Whether you're pursuing your dream role or changing direction, to succeed in any career you need more than a degree. From hands-on experience to industry insights, creative thinking to communication skills, we'll help you build confidence, forge links and gain the attributes that set you apart in the working world.

# Focus on your future

### Strong links

Our lecturers and tutors partner with careers professionals and industry experts, making sure they're teaching key employability skills. At the same time, they work closely with employers and industry figures to explain what makes our postgraduates different.

### Launching (and re-launching) careers

You could have a dream job clearly in mind, or are wondering where to start. Perhaps you're looking for fresh direction in your current career. That's where our experienced consultants step in. They offer CV and job search strategies, one-to-one sessions, small group workshops, interviews, portfolio and presentation advice. Plus there's round-the-clock support available through MyCareer.

### When opportunity knocks

Being quick off the block can make all the difference in a competitive careers market. So, we keep you up to date with the latest news on vacancies, recruitment schemes and other opportunities – as well as developments in key sectors.

### Social networking

We'll introduce you to graduate recruiters up and down the country. And we'll connect you to big brands (and small, flourishing businesses) at our industry insights events, employer presentations and networking evenings. We know that a big part of university and successful careers is about meeting people and building networks.

### Focused work experience

Your postgraduate degree may involve industry placements or projects. These are fantastic opportunities to develop career-specific skills and gain experience that will stand out on your CV. We offer support to find a placement, apply and succeed in interviews – plus opportunities to meet employers.

### Earn while you learn

Bath Spa University Job Shop is a free, exclusive-to-students recruitment service. It's dedicated to finding you good quality and well-paid part-time employment while you're at University.

"Employment rates in professional and managerial jobs for students graduating from postgraduate courses at Bath Spa University is in the top 25% of all UK universities\*."

\*Based on UK domiciled graduates from postgraduate degree programmes that responded to the Destination of Leavers from Higher Education (DLHE) survey for 2016/17 leavers. HESA 2018



**The next generation of entrepreneurs**

Do you have an idea that'll set the world alight? Or simply want the freedom to tread your own path? Outside the seminar room, we offer lots of opportunities to fire up your entrepreneurial spirit. Our BathSparks programme offers year-round workshops and events, while Cool Ventures provides one-to-one business advice and The Student Enterprise Society connects you to other business-minded students. And because big ideas need room to grow, there's £10,000+ of start-up funding to be won through our innovation-based challenges.

**A creative trailblazer**

We're incredibly proud to be a national centre for teaching and learning in the creative industries. It's led to funding, which goes into major investment resources. And that means our students benefit from state-of-the-art, industry-standard facilities, inspiring projects with inspiring employers, and links to the UK's booming creative community.

**WE'VE FORGED STRONG LINKS WITH**

- Apple
- The National Trust,
- Enterprise Rent-A-Car
- IBM
- PwC
- Avon & Somerset Constabulary
- Marshfield Bakery
- Somer Valley FM
- The Environment Agency
- The NHS
- Dyson
- Aardman Animations
- Parragon Books
- The Theatre Royal
- Bath Festivals
- Ink Copywriters



ARUP



dyson



Shelter



BBC



NHS



1 in 7 jobs are likely to require a postgraduate degree by 2022, according to the UK Commission for Employment and Skills.

The UK Government's Graduate Labour Market Survey found that 77.8% of postgraduates aged 16-64 were in highly skilled employment in 2017.



## FACILITIES

Bath Spa is so much more than a university. It's a place to explore your passion, challenge the status quo, develop fresh thinking and push the boundaries. And when you're dreaming big, you need innovative, inspiring spaces that allow your ideas to take shape.

Here are just some of our cutting-edge facilities.

### Modern libraries

Each campus, including Corsham Court's postgraduate centre, has a well-equipped library offering books alongside a wealth of digital resources. There are specialist materials, such as resources for trainee teachers and exhibition catalogues to inspire art and design students. Plus, each has silent study areas for when you need to concentrate – as well as buzzing, collaborative spaces for meeting up. When you need them, our professional librarians are on hand too with advice and tutorials, supported by an electronic enquiry service.

### The Writing and Learning Centre

How to reference. Where to start your research. Even if you've come straight from an undergraduate degree, postgraduate study can bring a whole new set of challenges. Whether it's brushing up your writing abilities or building new digital literacy skills, the Writing and Learning Centre within the Newton Park library can help at every stage of your academic life – with drop-in advice, one-to-one sessions and guidance at the end of an email.

### Cutting-edge Commons

Our striking Commons building is the beating heart of our Newton Park campus. With 400 study seats, group working rooms and a café for refuelling, this bright, beautifully designed space is a round-the-clock hive of activity.

Commons also houses some of the region's best digital and studio resources, equalling those found in commercial organisations and broadcasting houses. We're also proud to offer up-to-the-minute industry-standard music technology facilities, including three ProTools HD recording studios and mixing suites.

### The latest technology

Because inspiration can strike at any time of the day (or night), hundreds of computers, including subject-specialist technologies, are available to you round the clock. Or, if you prefer to BYO, you can connect your laptop wirelessly. Details on this and a host of other helpful guides are available on our user-friendly online help pages.

### Real virtual learning

Teaching at Bath Spa goes far beyond the seminar room. Through Minerva, your lecturers can send you digital course and library materials, link you to easy-access reading lists and open up online discussion forums – while you can keep tabs on your library research and submit your work electronically, wherever you are. You'll also have access to Lynda.com, with all sorts of information from building academic skills to starting your own business.



# All you need to succeed





Explore  
[www.bathspa.ac.uk/facilities](http://www.bathspa.ac.uk/facilities)

# Funding your way

When it comes to an investment in your future, postgraduate study is shown to offer very good returns. As well as giving you a chance to focus on a subject that really fascinates you, studies show that postgraduate qualifications can open the door to higher-paid careers.

Fees, funding, managing money and seeking support – we’re here to help you get to grips with the financial side of postgraduate study, so you can focus on pursuing your passion.

**Postgraduate fees**

For an at-a-glance breakdown of what our postgraduate courses cost, start with the table opposite.

**How to pay**

Card, cheque or via a sponsor, by instalments or as a one-off payment – there’s plenty of flexibility when it comes to paying for your fees. It just needs to be in pound sterling.

**Added extras**

If you’re an art and design student, we’ll make sure you have easy access to our workshops and studios. We use links to trade partners to keep these spaces continually stocked with materials, so you can unleash your creativity – without being limited by what’s in your wallet. And we subsidise as many activities as possible for all students, including events and exhibitions. To do all this, your course fee includes a contribution towards materials and study visits.

The contributions for 2019/20 are £170 for MA Fine Art, MA Drawing, MRes Art and Design and MA Visual Communication, and £290 for MA Design (Ceramics) and MA Design (Fashion and Textiles).

**Pre-sessional English Language fees**

International students can prepare for postgraduate life in a UK university with our Pre-sessional English Language courses. Covering everything from critical thinking to essay writing, they equip you with the skills and confidence to get the best out of your degree. For 2019/20, the full-time fees are £1,500 for the 6 week course; £3,000 for the 12 week course; and £4,000 for the 16 week course.

**Postgraduate funding**

**Postgraduate Master’s Loan**

Postgraduate Master’s Loans are designed to give everybody, no matter their financial background and course subject, an opportunity to study at university. In 2019/20, up to £10,906 in funding is available to you, whether you’re studying full-time, part-time or via distance learning. It’s up to you how much you want to borrow, and the money is paid directly to your bank account in instalments during your course. You can put the funds towards fees, living costs or other study bills.

To be eligible, you need to:

- Not have a Master’s degree – or the equivalent, or higher – already
- Be under 60 years old when you begin your course
- Study at a UK university
- Be a current UK or EU national\*, or have unrestricted ‘settled status’ – and have been living in England for at least three years before your course starts

**Repaying your loan**

Loans become repayable from the April after you graduate and you’ll only start repaying if your income is above the repayment threshold of £21,000 a year. You’ll repay 6% of your earnings above this threshold each year.

**Postgraduate Doctoral Loan**

2018 saw the introduction of new Postgraduate Doctoral Loans. Up to £25,000 is available to all English-resident students at UK universities, for any type of PhD and similar research programmes.

**Studentships**

Studentships are postgraduate positions that have funding attached for fees, living expenses or both. They are mainly funded by Research Councils UK.

\*Other EU nationals and those with refugee status may also be eligible. Please contact us for more information.





Charities and trusts

These grants are usually dedicated to students from lower income households or with a high-achieving academic background.

Sponsorship by employers

We accept postgraduate students on courses funded by their employer. Your HR department should be able to tell you more.

Teacher Education funding

A range of incentives and financial support is available for those undertaking a teacher education programme such as a PGCE.

External bursaries

Various postgraduate organisations offer partial bursaries to contribute to Master’s and PhD funding. Find out more at:  
[www.findamasters.com/fundingawards](http://www.findamasters.com/fundingawards)  
[www.postgrad.com/bursaries](http://www.postgrad.com/bursaries)

Disabled Students’ Allowances (DSAs)

If you’re based in England and living with a disability, long-term health condition, mental health condition or specific learning difficulty for which you need extra support or specialist equipment, you can apply for DSAs. These are needs-focused not income-based and you don’t need to pay them back.

Bath Spa University funding

Postgraduate Scholarship for Bath Spa University Alumni

Every Bath Spa University graduate and alumni studying for a taught postgraduate degree here is eligible for a scholarship of between £1,400 and £1,600 towards the cost of tuition fees.

MA Writing Award

To celebrate incredible writing talent and help someone on their journey towards a Creative Writing, Travel and Nature Writing or Writing for Young People Master’s, this once-a-year £1,000 award is supported by Jack and Audrey Ladevèze.

The Jennifer Skellett Postgraduate Bursary

Awarded annually to a music student from the last three years, this £1,500 bursary is a helping hand towards a postgraduate music degree at Bath Spa.

University Access Fund (UAF)

The University Access Fund has been established to help students who find themselves in financial hardship. Anyone can apply to the Student Support Service for this discretionary support, and most grants don’t need to be paid back.

Doctorial Training Partnership

As a member of the South West and Wales Doctoral Training Partnership (SWW DTP), we have shared access to £14.2 million in funding from the Arts and Humanities Research Council. It’s dedicated to postgraduate research, training and development in a range of subjects, including creative writing and music.



Explore

[www.bathspa.ac.uk/scholarships-and-funding](http://www.bathspa.ac.uk/scholarships-and-funding)  
[www.bathspa.ac.uk/money-advice](http://www.bathspa.ac.uk/money-advice)  
[www.gov.uk/funding-for-postgraduate-study](http://www.gov.uk/funding-for-postgraduate-study)

2019/20 POSTGRADUATE FEES				
	UK/EU Postgraduate Fees		International Postgraduate Fees	
	Full-time	Part-time	Full-time	Part-time
TAUGHT POSTGRADUATE DEGREES				
Band 1 - all classroom based degrees	£7,195	£3,600	£13,300	N/A
Band 2 - all lab/studio based degrees	£7,395	£3,700	£14,300	N/A
Band 3 - all Bath School of Art & Design degrees	£7,995	£4,000	£14,900	N/A
MA Creative Writing	£7,600	N/A	£14,800	N/A
MA Feature Filmmaking	£9,500	£4,750	£14,500	N/A
MA Writing for Young People	£7,600	£3,800	£14,800	N/A
MBA Leadership	N/A	£18,000*	N/A	N/A
Professional Practice Fee	£550	N/A	N/A	N/A
The National Award for SENCo	N/A	£2,340	N/A	N/A
RESEARCH DEGREES (MPHIL/PHD)				
PhD Creative Writing (normal mode of delivery)	£6,100	£3,050	£13,300	N/A
PhD Creative Writing (low residency option)	N/A	N/A	£16,000	N/A
PhD (low residency option)	£6,900	N/A	N/A	N/A
All other Research Degrees	£4,327	£2,165	£13,300	N/A

\*Total fee for 2 years

# International students



Asia. North America. Latin America. Europe. Bath Spa is home to over 1,000 international students and every year we welcome students from over 80 countries to our beautiful Bath Spa campuses and their friendly communities. To help you settle in and get the very best out of your scholarly – and social – life here, we offer all sorts of support and social events, from day one.







"94.1% of our overseas and 100% of our EU postgraduate students are in work and/or further study 6 months after graduation." HESA: Destination of Leavers from Higher Education (DLHE) 2018



#### Dedicated support

Our International Office, International Student Reps and personal peer mentor connect you to a network of friendly people, dedicated to helping you make the most of your time at Bath Spa. Before you arrive, we'll also offer plenty of help with everything from admissions and visas. While you're here, you can call on free immigration advice, and language and study support from the English Language Unit (ELU) if you need it.

#### A place to call home

City or campus? Single room or shared apartments? Townhouse or lakefront residence? At Bath Spa, there's a wealth of accommodations options to suit every taste – and to help you feel right at home.

You could take advantage of the social scene from living in halls of residence at Newton Park, or base yourself just a short bus ride from campus – with restaurants, bars and shops on the doorstep. There's also the option to live independently, and we can recommend private sector homes for you and groups of friends. Some international students also choose a homestay where we place you with a local family in a close-to-campus home that we've thoroughly checked out – this can be a great way to get to know your new city and its culture.

#### Speaking the language

If you're not from a majority English-speaking country, we'll ask you for a recognised English language qualification – that's from the last two years – when you apply. For most postgraduate courses, you'll need to hold IELTS level 6.0, with at least 5.5 in each band – check with the specific course you're interested in. If you score less than the entry requirement, we'll offer you the chance to join our bespoke English Language Pre-session course first.

#### How to Apply

Apply to Bath Spa online, using the 'Apply Now' button on your course's webpage. There's no fee for applying directly and you can upload any supporting materials you need to. Our International Admissions Team will take it from there.

#### Scholarships

We offer a range of scholarships for our international postgraduate students. Visit [www.bathspa.ac.uk/scholarships-and-funding](http://www.bathspa.ac.uk/scholarships-and-funding) for the latest information.

#### INTERNATIONAL STUDENT PROFILE

**BRITTANY McCOMAS,  
MA SCRIPTWRITING**

*"Before coming to Bath Spa I was a professional actor and singer. I recorded in Nashville TN and worked for Disney, and I have a BFA in Theatre from West Virginia University. I thought Bath Spa would be the perfect place to further my education in scriptwriting. Bath Spa is one of the most beautiful places on earth. The faculty and administration made me feel at home here, and I knew I would receive a well-rounded education in scriptwriting. The tutors are amazing, and they don't spoon-feed you. The course has taught me to make contacts and to go out and find everything I am looking for."*



**Explore**  
[www.bathspa.ac.uk/international](http://www.bathspa.ac.uk/international)  
[international@bathspa.ac.uk](mailto:international@bathspa.ac.uk)



**Question. Scrutinise. Push boundaries. Make an impact. A postgraduate research degree is one of the most fulfilling, rewarding challenges you can embark on, giving you a unique opportunity to dig deeper into a subject that truly inspires you.**

When you join Bath Spa, you'll become part of a productive, passionate, collaborative community of original thinkers. And you'll step into a lively and diverse research environment. We're small enough to offer a personal approach to learning, but we're home to big, bold ideas – giving you space to concentrate on your particular passion.

#### Research degrees at Bath Spa

We offer supervised, research-led PhD or MPhil degrees centred around three core elements: creativity, culture and enterprise. Between the Research Excellent Framework (REF) assessments in 2008 and 2014, we tripled our output of excellent, world-leading research across these three strands and 2014 saw our best ever REF results.

Research themes shape and inform the work of our researchers. We have university-wide research centres in Environmental Humanities (art, science, culture and environment); Transnational Creativity and Education; and Culture and Creative Industries.

In addition, we have established research strengths in:

- Art and Design
- History and Heritage
- English
- Creative Writing
- Psychology
- Education and Teaching
- Business and Management
- Music and Performing Arts

#### The Graduate College

Guidance from experienced scholarly supervisors. Access to a wealth of inspiring resources and cutting-edge facilities. Opportunities to become part of a lively research environment. The Graduate College, based at our Corsham Court campus, is the hub for all research degrees. Through its close links with all schools of study, you'll have plenty of support at your fingertips, such as symposium funding and the chance to present papers at conferences. The Graduate College is your stepping stone to the wider world of research – at Bath Spa, and beyond.

#### Our Researcher Development Programme

Dynamic, vibrant, thought-provoking and attention-grabbing – our wide-ranging research portfolio saw us awarded HR Excellence in Research in 2012. Since then, we've continued to champion our researchers' personal and professional development at every stage, helping our students get the very best from their doctorate experience. We use the Vitae Researcher Development Framework – a best practice model for research excellence across the academic world – as a launchpad to workshops, training and events, such as Getting through your Viva and How to be an engaging Researcher.

#### Applying

First, contact the School or Department you're keen to join. Once you've talked through your field of interest, you'll need to make a formal application.

The Graduate College can help put you in touch with the appropriate contact – email us at [PGRadmissions@bathspa.ac.uk](mailto:PGRadmissions@bathspa.ac.uk)

#### How you'll be assessed

It all depends on your area of study. Usually, you'll present a thesis (between 20,000 and 40,000 words for a MPhil and 40,000 to 80,000 words for a PhD) and take part in a viva voce examination. If you're studying the creative arts or a practice-led project, your final assessment might include an exhibition or performance piece.

# Research degrees





#### Creative collaboration

We're incredibly proud to be part of the Bristol and Bath Creative Research and Development Programme, a project that champions the brilliant, inspiring work produced in the South West. It brings together the region's universities and its brightest, most innovative businesses. In 2018, we were thrilled to receive a multi-million-pound investment from the Arts and Humanities Research Council's Creative Industries Clusters Programme.

#### Doctoral Training Partnership

Bath Spa University is a part of the South, West and Wales Doctoral Training Partnership – a consortium of ten universities funded by the Arts and Humanities Research Council which offers 30 doctoral studentships in each academic year. These come with a fee waiver and a full stipend at RCUK rates. It's a positive, valuable partnership that gives our students access to resources, talented supervisors, events, placements and peer networks.



Explore

[www.bathspa.ac.uk/research](http://www.bathspa.ac.uk/research)









# Courses



## ART AND DESIGN

- 29 MRes Art and Design
- 30 MA Curatorial Practice
- 31 MA Drawing
- 32 MA Design: Ceramics
- 33 MA Design: Fashion and Textiles
- 34 MA Fine Art
- 35 MA Visual Communication

## EDUCATION

- 37 Professional Doctorate in Education (EdD)
- 38 The National Award for SENCo
- 39 MA Inclusive Education
- 40 MA Education: Leadership and Management
- 41 MA Education: Early Childhood Studies
- 42 MA Counselling and Psychotherapy Practice
- 43 MA Professional Practice
- 44 PG Cert Higher Education
- 45 MA Professional Practice in Higher Education

## WRITING AND ENGLISH

- 47 MA Creative Writing
- 48 MA Scriptwriting
- 49 MA Travel and Nature Writing
- 50 MA Writing for Young People
- 51 MA Children's Publishing
- 52 MA Crime and Gothic Fictions

## MUSIC

- 55 MA/MRes Composition
- 56 MA Music Performance
- 57 MA Sound Arts
- 58 MA Sound Design
- 59 MA Sound Production
- 60 MA Songwriting

## FILM AND MEDIA

- 63 MA Feature Filmmaking

## PERFORMING ARTS AND DANCE

- 64 MA Classical Acting
- 65 MA Creative Producing
- 66 MA Dance
- 67 MA Directing
- 68 MA Directing Circus
- 69 MA Performing Shakespeare

## COMPUTING

- 71 MSc Creative Computing

## HERITAGE

- 72 MA Heritage Management

## BUSINESS AND MANAGEMENT

- 73 MA Arts Management
- 74 MA Business and Management
- 75 MBA Leadership

## PSYCHOLOGY

- 77 MSc Principles of Applied Neuropsychology

## ENVIRONMENT

- 78 MA Environmental Humanities
- 79 MSc Environmental Management





# MRes Art and Design

**AWARDS:**  
MRes Art and Design

**LOCATION:**  
Sion Hill campus

**FEES:**  
UK/EU Full-time: £7,995  
International: £14,900

**LENGTH:**  
Full-time: 1 year  
Part-time: 2 years

**KEY FEATURES:**  
Construct your own unique curriculum using the Art and Design Master's modules on offer

Benefit from the expertise of our research-active staff, plus specialist tools, workshops, and spaces

Innovate, reflect and take risks – become a resilient, autonomous, lifelong practitioner and learner

**APPLICATIONS:**  
An online application can be made using the 'Apply Now' button on the course's webpage. For any admissions enquiries please contact:

T: +44 (0)1225 876180  
E: [admissions@bathspa.ac.uk](mailto:admissions@bathspa.ac.uk)  
[www.bathspa.ac.uk/postgrad-apply](http://www.bathspa.ac.uk/postgrad-apply)

**ENQUIRIES:**  
For all enquiries please email [postgraduate@bathspa.ac.uk](mailto:postgraduate@bathspa.ac.uk)  
Course Director: Dr Graham McLaren

**FIND OUT MORE:**  
[www.bathspa.ac.uk/pg-art-and-design](http://www.bathspa.ac.uk/pg-art-and-design)

Our MRes in Art and Design is a natural first step towards a PhD, and can also be your route to creating a new product or body of work for the marketplace. You'll have the opportunity to develop your bold ideas – from commercial products to fine art exhibitions – while earning a postgraduate degree.

Our course offers you the flexibility to shape your learning in support of a major independent project that you have conceived and planned. The course is intended to support you to become a practitioner in your chosen discipline, able to strategise and lead within a creative industries context.

The bi-weekly MRes forum brings together staff and students from across the School to hear from visiting practitioners and discuss themes pertinent to your research.

### COURSE STRUCTURE AND CONTENT

The course begins with interdisciplinary research designed to build your understanding of the approaches that are relevant to your ambitions. This is intended to support you throughout your studies and into work or further research.

You'll plan, experiment and take risks in ways that support development towards your major independent project. Depending on your particular interests, you'll draw on teaching and learning from Master's courses in the School of Art and Design – including Ceramics, Curatorial Practice, Fashion and Textiles, Fine Art and Visual Communication – thereby introducing you to students and staff from across the School.

The independent Master's Project offers you the opportunity to address a complex research task systematically and comprehensively through to completion, working to industry-informed standards and making use of the plans that you developed earlier in the programme.



**ASSESSMENT**  
We employ a variety of exercises to test your developing skills. These range from exhibitions of your project work through to oral presentations and essays.

**ENTRY REQUIREMENTS**  
You'll need a good undergraduate degree in an art and design subject or equivalent experience (this could include a degree in other disciplines together with subsequent studio practice).

**YOUR FUTURE CAREER**  
Our graduates progress to a wide range of career opportunities that include further research to doctoral level. The MRes allows you the flexibility to shape your career according to your interests, working with discipline specific staff and the University's expert team of careers advisors.

# MA Curatorial Practice

**AWARDS:**  
MA Curatorial Practice  
Postgraduate Diploma (PG Dip)  
Curatorial Practice  
Postgraduate Certificate (PG Cert)  
Curatorial Practice

**LOCATION:**  
Sion Hill and Corsham Court campuses

**FEES:**  
UK/EU Full-time: £7,395  
International: £14,300

**LENGTH:**  
Full-time: 1 year  
Part-time: 2 years

**KEY FEATURES:**  
Taught by curators, working with a rich group of diverse partner organisations in the sector  
Combines contemporary practice with theory in a flexible approach.  
Highlights the roles of audiences, collections and new contexts

**APPLICATIONS:**  
An online application can be made using the 'Apply Now' button on the course's webpage. For any admissions enquiries please contact:  
T: +44 (0)1225 876180  
E: admissions@bathspa.ac.uk  
www.bathspa.ac.uk/postgrad-apply

**ENQUIRIES:**  
For all enquiries please email postgraduate@bathspa.ac.uk  
Course Director: Dr Ben Parry

**FIND OUT MORE:**  
www.bathspa.ac.uk/pg-curatorial-practice



**MA Curatorial Practice focuses on curating as a contemporary practice, bringing together history, theory and practice. We ask what is it that makes the role of the curator distinct, and how do we understand the essentials of curating, when it has become such a buzzword.**

The course embraces contemporary curating in historic and collection-based settings as well as contemporary venues, digital, 'pop-up' and site specific contexts. It is delivered by experts in the field and working curators.

The course covers a wide range of curatorial approaches, from management of historical collections to curating at the cutting edge of contemporary art, craft and design. Our students come from a wide variety of backgrounds; we challenge you to develop your interests, while understanding what you share with others across our discipline. Engagement and understanding audiences are central to curatorial practice.

**COURSE STRUCTURE AND CONTENT**  
If you're studying the course full-time you will study two modules per trimester, alternatively part-time students will study one per trimester.

Research Methodologies will introduce the generic research methodologies and the ways subject specific material, analysis and evaluation techniques can be a vehicle for personal study.

In The Role of the Curator we consider the politics of curating, real-world issues and discuss the changing role of the curator.

Collections and Collecting considers the nature of collecting and the influence of collecting on curatorial practice.

Reaching Audiences allows you to present or study a live project to a real audience.

The Master's Project is an assessment that can include a dissertation, the study of historical or archival case studies, curating an exhibition or project in a venue, or forms of digital production.

**ASSESSMENT**  
Project based work can be developed and assessed as part of the course. Real life projects can be pursued in response to assessment assignments, especially in relation to the final 'Master's Project' double module.

**ENTRY REQUIREMENTS**  
A good first degree (2:1 or above) in a relevant subject. Such a qualification is not necessary if your personal and professional experiences shows a high level of commitment and understanding.

**YOUR FUTURE CAREER**  
Recent graduates have found curatorial work in:

- Museums and galleries
- Galleries/arts administration
- Public Art
- Education, learning and engagement roles
- Self-employed freelance curatorial work and consultancy
- Publishing and media work

**STUDENT PROFILE**  
**BARBARA MULAS**  
**MA CURATORIAL PRACTICE**

*"As an art curator and mediator from Italy, and having moved to Bristol, this year has been challenging: new life, new friends, new language and a new educational approach. I have developed as a person and thanks to everything on the course combined, I now feel like a more complete curator."*

01 Detail of 'Spoiled' by Elaine Wilson  
02 Detail of 'Shards' installation in Bath School of Art and Design gallery



# MA Drawing

**AWARDS:**  
MA Drawing

**LOCATION:**  
Sion Hill and Locksbrook Road

**FEES:**  
UK/EU Full-Time: £7,995  
International: £14,900

**LENGTH:**  
Full-time: 1 year  
Part-time: 2 years

**KEY FEATURES:**  
Rethink drawing. Make images on the page and beyond: digitally, spatially and in real time

Draw, innovate, research. Create your place within the evolving landscape of contemporary art, design and in trans-disciplinary contexts

Gain the practical expertise you'll need to develop projects, exhibitions and commissions in a range of fields

**APPLICATIONS:**  
An online application can be made using the 'Apply Now' button on the course's webpage. For any admissions enquiries please contact:

T: +44 (0)1225 876180  
E: [admissions@bathspa.ac.uk](mailto:admissions@bathspa.ac.uk)  
[www.bathspa.ac.uk/postgrad-apply](http://www.bathspa.ac.uk/postgrad-apply)

**ENQUIRIES:**  
For all enquiries please email [postgraduate@bathspa.ac.uk](mailto:postgraduate@bathspa.ac.uk)  
Course Director: Dr Robert Luzar

**FIND OUT MORE:**  
[www.bathspa.ac.uk/pg-drawing](http://www.bathspa.ac.uk/pg-drawing)



Drawing is the basis of everything you'll do in art and design. It's the main way in which we as practitioners create ideas – visibly and tangibly.

MA Drawing is a studio-based course. You'll explore contemporary and interdisciplinary practices practically, theoretically and through research to become a researcher-practitioner who can innovate drawing in its most focused, singular form and yet be open to complexity.

**COURSE STRUCTURE AND CONTENT**  
MA Drawing is designed to fully support the development of your creative potential and research skills in an ever-changing and challenging world.

You'll build an independent and professional practice that relates to diverse audiences and contemporary cultures. Through research, critical scrutiny and rigorous studio practice, you'll identify and create your individual position as a drawing practitioner.

You'll engage with drawing principles such as mark, notation, gesture, and how we engage physically and mentally with drawing. We'll also explore crossovers with other disciplines, for example writing, to produce works that transcend the established limits of drawing. You could create books, scripts and diagrams, and take other cross-disciplinary approaches – we want you to challenge conventions and originate new forms of drawing.

The course covers the following key areas:

- Research Methods allows you to build your understanding of interdisciplinary research.
- Situating Drawing in Practice
- Innovating Drawing for Practice
- Drawing in Contemporary Creative Practice

The final Master's Project is an opportunity to address a complex research task systematically and comprehensively through to completion. You'll create a body of work to exhibit – this could include performance and live art, or projects, commissions, residencies and exhibitions established outside the course.

**ASSESSMENT**  
You'll be assessed through a range of methods including verbal and written reports, presentations, essays, written reflections, projects and exhibited works. We'll support you at each stage of your studies to prepare for your assessments, through one-to-one tutorials and feedback on developing works and research.

**ENTRY REQUIREMENTS**  
You'll usually have a good undergraduate degree in an art and design subject and an existing or emerging practice.

You'll need to submit a portfolio to give us an insight into who you are as a practitioner. We ask that you include a wide variety of work in your portfolio, including documentation, sketchbooks, visual research, tests and trials, and finished works.

We'll also be looking for a sample of your writing, to assess your potential for the research and academic writing elements of the course.

**YOUR FUTURE CAREER**  
Our aim is that you'll gain the skills you need to develop and sustain a successful career as a professional artist or related practitioner. Drawing informs and supports a range of industries and fields including architecture, culture, design, technology, theatre, education and curation.

On completion of the course, you'll have had your work disseminated and/or exhibited in a variety of ways, including private and public gallery exhibitions, commissions, open competitions, journals, and residencies. You'll also have gained the knowledge and skills to pursue further research study at PhD level as well as to sustain your independent practice.

In the region there are a number of specialist resources dedicated to drawing. Employers such as Hauser and Wirth Somerset, Woodford Litho, Idea Generation Gallery, Yorkshire Sculpture Park, GX Gallery (London), Arnolfini (Bristol) and The Nottingham Contemporary Art Gallery have recruited graduates from the Bath School of Art and Design.

# MA Design: Ceramics

**AWARDS:**  
MA Design: Ceramics  
Postgraduate Diploma (PG Dip)  
Design: Ceramics  
Postgraduate Certificate (PG Cert)  
Design: Ceramics

**LOCATION:**  
Sion Hill and Locksbrook Road

**FEES:**  
UK/EU Full-time: £7,995  
International: £14,900

**LENGTH:**  
Full-time: 1 year  
Part-time: 2.3 years (7 trimesters)

**KEY FEATURES:**  
Taught by leading academics/  
practitioners, with a high level of  
tutor input  
Excellent technical support and  
facilities with specialist equipment  
Regular visits from practising  
ceramicists and artists

**APPLICATIONS:**  
An online application can be made using  
the 'Apply Now' button on the course's  
webpage. For any admissions enquiries  
please contact:  
T: +44 (0)1225 876180  
E: admissions@bathspa.ac.uk  
www.bathspa.ac.uk/postgrad-apply

**ENQUIRIES:**  
For all enquiries please email  
postgraduate@bathspa.ac.uk  
Course Director: Dr Conor Wilson

**FIND OUT MORE:**  
www.bathspa.ac.uk/  
pg-design-ceramics



**Rooted in material investigation, this course allows exploration of ceramics through art, craft and design contexts. You'll develop skills and knowledge through an exciting combination of material investigation and research. This will allow you to contextualise your practice in relation to current debates in the visual arts and to develop an individual production strategy.**

You'll receive specialised ceramics tuition from a dedicated team of academic and technical staff within the ceramics area, as well as from regular part-time lecturers and visiting practitioner/artists. You'll be part of a lively ceramics community, based around comprehensive workshop provision and studio spaces. As postgraduate students, you'll have the opportunity to extend and hone your making skills in conjunction with developing your understanding of how a ceramics specialisation might relate to production in art, craft or design contexts.

**COURSE STRUCTURE AND CONTENT**

In the first trimester, you'll establish the direction of your creative practice through studio and workshop-based making. Research Methods will introduce you to the tools of practice-based research, allowing you to bring theory and practice closer together, while developing creative and academic writing skills through and about your practice.

In the second trimester, you'll negotiate a proposal for self-directed study. You'll deepen your knowledge and understanding of debates in ceramics, situating the personal interests and concerns that inform your work within an appropriate contemporary context.

The final trimester comprises an individually negotiated and self-initiated body of work building on the knowledge and skills already acquired. You'll be supervised by tutorial through to completion.

**ASSESSMENT**

Practice modules are assessed through studio exhibition of work with a supporting statement; theory modules through written assignment and verbal presentation. The final Master's Project is assessed through exhibition and Evaluative Report. There are no written examinations.

**ENTRY REQUIREMENTS**

You'll need a good undergraduate degree in ceramics or equivalent experience. This could include a first degree in other disciplines together with subsequent studio practice.

**YOUR FUTURE CAREER**

Typical career destinations include:

- Exhibiting
- Ceramic design
- Museum work
- Arts administration
- Public art
- Research
- Teaching

**STUDENT PROFILE**  
**STEVEN SALES**  
**MA DESIGN: CERAMICS**

*"The MA Design: Ceramics course at Bath Spa was appealing because the modules of self-directed study were complemented with modules of critical and theoretical analysis. The part-time structure of the course enabled me to continue my career as a teacher. Planning and executing regular exhibitions was essential in gaining industry experience. Workshops and lectures from respected practitioners provided a wide scope for the range of different career paths and approaches to ceramic making."*

01 Rupert Brakspear *Pantheon* 2016  
02 Josie Llewellyn *Marine Plastic* 2017  
03 Steven Sales *Accumulation Vessel* 2017



# MA Design: Fashion and Textiles

**AWARDS:**  
MA Design: Fashion and Textiles  
Postgraduate Diploma (PG Dip)  
Design: Fashion and Textiles  
  
Postgraduate Certificate (PG Cert)  
Design: Fashion and Textiles

**LOCATION:**  
Sion Hill and Locksbrook Road

**FEES:**  
UK/EU Full-time: £7,995  
International: £14,900

**LENGTH:**  
Full-time: 1 year  
Part-time: 2.3 years (7 trimesters)

**KEY FEATURES:**  
Staff have broad national and international industry experience which underpins and informs the course  
  
Develop your creative design practice and thinking, while building valuable marketing and business skills  
  
Alumni enjoy diverse career destinations with many successfully working for themselves

**APPLICATIONS:**  
An online application can be made using the 'Apply Now' button on the course's webpage. For any admissions enquiries please contact:  
T: +44 (0)1225 876180  
E: admissions@bathspa.ac.uk  
www.bathspa.ac.uk/postgrad-apply

**ENQUIRIES:**  
For all enquiries please email postgraduate@bathspa.ac.uk  
Course Director: Tim Parry-Williams

**FIND OUT MORE:**  
www.bathspa.ac.uk/  
pg-design-fashion-and-textiles

This course offers ambitious individuals the opportunity to become designers, designer-makers or textile artists, either within the professional industries or to set up small businesses independently.

The programme of study allows you to freely develop creative design practice and valuable marketing and business skills, building comprehensive understanding, vision and direction.

The course is developed through tutorials, seminars, lectures, visiting speakers, group critiques, market research and personal research. You will be introduced to research skills and methods, product development, design management and methods, with marketing and business skills.

The emphasis of the course is learning how best to present ideas, and where and how to place them in the market.

Students develop and propose a personal route of study and explore and research textiles through knit, print, weave, embroidery, mixed-media or surface engineering for fashion or interiors, applied art, or in fashion design.

**COURSE STRUCTURE AND CONTENT**

In the first trimester, you'll study Research Methods. This will introduce you to the tools of practice-based research, allowing you to bring theory and practice closer together, while developing creative and academic writing skills through and about your practice. You'll also study The Development of Product, Market Research and Product Ideas.

In the second trimester, you'll study Marketing skills, developing relevant professional skills and an understanding of marketing requirements for textile designers, makers and artists. You'll also study

Product Sampling and Development and Research.

The final trimester focuses on a practice-based Master's Project. This is about bringing ideas to a professional conclusion often in the form of an exhibition of finished work and supporting promotional materials.

**ASSESSMENT**

The PG Cert is assessed by studio and/or portfolio presentation underpinned by a marketing assignment.

The PG Dip involves a written report including market analysis of your chosen product field. Practical work is presented by studio and/or portfolio presentation and an evaluative report.

For the MA you will present a cohesive body of creative work, supported by an extended report.

**ENTRY REQUIREMENTS**

Admission is normally based on a good undergraduate degree in textiles/fashion design together with an interview. Related honours degrees (for example illustration) and other relevant experience will also be considered.

**YOUR FUTURE CAREER**

Alumni work in a variety of sectors and levels of different industries in roles including:

- Studio/freelance/industrial designer
- Designer-maker
- Practising textile artist
- Trend forecaster
- Materials researcher
- Stylist
- Museum officer
- Teacher



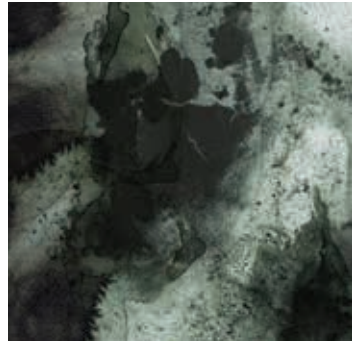
**STUDENT PROFILE**

**STEPHEN R HUGHES**  
**MA DESIGN: FASHION AND TEXTILES**

"I chose to study MA Design: Fashion and Textiles because I wanted to re-engage in the practice. Studying at Bath Spa has given me the opportunity to expand my skills in fashion and textiles design at a higher level.

Engaging in higher level academia and discourse around theory and practice for fashion and textiles is one of the highlights of my time here. Studying the course has allowed me to realise my own potential in developing my personal practice and the opportunities for creating and selling my own product ranges.

The best thing about the course is the open, honest and encouraging feedback that you get in order to enhance your skills and creativity. A validation that your ideas and outcomes are worthwhile to mainstream industry."



# MA Fine Art

**AWARDS:**  
MA Fine Art  
Postgraduate Diploma (PG Dip) Fine Art  
Postgraduate Certificate (PG Cert) Fine Art

**LOCATION:**  
Sion Hill and Locksbrook Road

**FEES:**  
UK/EU Full-time: £7,995  
International: £14,900

**LENGTH:**  
Full-time: 1 year  
Part-time: 2 years

**KEY FEATURES:**  
Advance your creative potential and develop your work to professional exhibiting level

Taught by practising artists of national and international standing

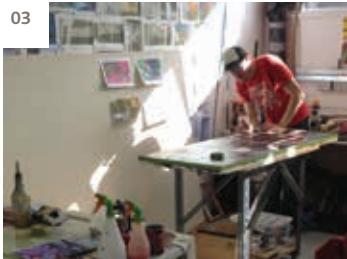
Permanent individual studio spaces (for full-time students) and excellent technical expertise and support

**APPLICATIONS:**  
An online application can be made using the 'Apply Now' button on the course's webpage. For any admissions enquiries please contact:

T: +44 (0)1225 876180  
E: admissions@bathspa.ac.uk  
www.bathspa.ac.uk/postgrad-apply

**ENQUIRIES:**  
For all enquiries please email postgraduate@bathspa.ac.uk  
Course Director: Andrea Medjesi-Jones

**FIND OUT MORE:**  
www.bathspa.ac.uk/pg-fine-art



The aim of the course is to examine and critically engage with the practice of art making. It is designed to stimulate and influence individuals to develop independent language in Fine Art through critical, ambitious and disciplined studio practice. The course structure facilitates and actively supports a broad range of activities (from painting to live art) with the aim of questioning and articulating historical and contemporary art contexts and practices.

It's a studio based programme, supported by excellent facilities and workshops. You'll be taught by nationally and internationally renowned practicing artists whose experience and knowledge of the subject facilitates a dynamic, dialogue-based learning environment.

**COURSE STRUCTURE AND CONTENT**  
Research Methodologies introduces generic principles and processes of research relevant to the practice.

Studio 1: Re-establishment of Studio Practice is designed to re-establish and situate your existing practice.

Studio 2: Developing Studio Practice, you'll be encouraged to pay greater attention to the exhibition element of your practice. In Aspects of Contemporary Art Practice you'll develop relevant research methods and advanced reflective research.

Studio 3: Masters Project is a double module with the aim of developing your practice and research from the previous modules to a professional standard, culminating in the final exhibition.

**ASSESSMENT**  
Assessment of each stage of the studio element of the course is by exhibition and research documentations.

**ENTRY REQUIREMENTS**  
You'll need a good first degree in Fine Art or its equivalent. You'll also need good working knowledge of Fine Art contexts, relevant practice-based methodologies and skills articulated in your portfolio. You will also be required to submit a personal statement.

**YOUR FUTURE CAREER**  
Fine Art graduates have worked and exhibited nationally and internationally, and established successful fine art practices.

**STUDENT PROFILE**  
**DAN WOOD**  
**MA FINE ART**

"I chose to do the MA Fine Art programme as working at home I lacked the discourse and interaction with other artists. The tuition and wealth of knowledge of the tutors and visiting lecturers has helped my work evolve and progress way beyond anything I could have imagined. The workshops available are great and the technicians are generous and helpful.

I chose Bath Spa because of the reputation of the institution along with the list of tutors associated with the programme. You get out of the course what you put into it, by fully engaging with your studio practice and research you will find the course rewarding. This course has left me with a self critical eye and the ability to research and produce high quality work. These skills will help me continue my practice independently and allow me to pursue a career as an artist with confidence."

A selection of work from MA Fine Art students  
01 Emma Dixon & Guy Bigland  
02 Edwina Daniels  
03 Dan Wood at work



# MA Visual Communication

**AWARDS:**  
MA Visual Communication  
Postgraduate Diploma (PG Dip) Visual Communication  
Postgraduate Certificate (PG Cert) Visual Communication

**LOCATION:**  
Sion Hill and Locksbrook Road

**FEES:**  
UK/EU Full-time: £7,995  
International: £14 ,900

**LENGTH:**  
Full-time: 1 year  
Part-time: 2 years

**KEY FEATURES:**  
We have a truly international cohort and have welcomed students from many countries including the UK, China, Taiwan, Mexico, Columbia, India, Nepal, Japan, Italy, Greece, France and Bulgaria

We provide workshops in photography, etching, letterpress, screen print, plastics, woodwork, paint preparation and casting

Apply for a wide range of academic workshops, competitions and professional awards

**APPLICATIONS:**  
An online application can be made using the 'Apply Now' button on the course's webpage. For any admissions enquiries please contact:  
T: +44 (0)1225 876180  
E: admissions@bathspa.ac.uk  
www.bathspa.ac.uk/postgrad-apply

**ENQUIRIES:**  
For all enquiries please email postgraduate@bathspa.ac.uk  
Course Director: Andrew Southall

**FIND OUT MORE:**  
www.bathspa.ac.uk/pg-visual-communication



This is a practical master's course on which specialist photographers, illustrators and graphic designers work alongside one another. We encourage you to work independently and collaboratively, while exploring shared visual language.

Working in consultation with your tutors and with other students, you will build a critical and professional context for your practice in the process of developing each of your projects. Your growing confidence and increased abilities will be clearly evident in the work you make with us and the portfolios you construct.

You'll develop your visual communication practice, concentrating on practical, conceptual, historical and contemporary components, as well as engaging in critical dialogue with students from a range of related fields. We will help you to integrate the skills you learn with us and become a knowledgeable, confident and effective graphic designer, illustrator or photographer.

**COURSE STRUCTURE AND CONTENT**  
In the first two modules, you'll examine practical and conceptual approaches to your work through academic workshops and presentations, identifying your strengths and weaknesses and progressively improving your approach to practice.

In the next two modules, you'll have the opportunity to develop two exciting collaborative works, focused first on a geographical location and then toward a niche global audience.

In the final module, you'll decide on the content and the structure of your Master's project and develop a collaborative or individual work that reflects your particular approach and specialist interests.

**ASSESSMENT**  
You'll be assessed through practical projects backed up by integrated research work in sketchbooks or blogs, collated materials, and presentations. Your final project will appear in a public exhibition.



**ENTRY REQUIREMENTS**  
We are looking for bright, open and enthusiastic individuals with experience in a visual communication specialism and who are looking to expand their outlook and collaborate to produce exciting new work. You'll need a good first degree or its equivalent and a portfolio of supporting work in your specialist area.

**YOUR FUTURE CAREER**  
Graduates have progressed to careers as:

- freelance illustrators, photographers and graphic designers
- specialist screen printers
- photo editors for design agencies, magazines and journals
- designers for architectural and engineering practices
- photographers and designers for the M.O.D. and other specialist areas.
- teachers and lecturers

Many also work on research projects in conjunction with fine artists, or scientists, or have gone on to become teachers.

**STUDENT PROFILE**  
**MANON DUHAMEL**  
**MA VISUAL COMMUNICATION**

*"Aiming to solidify and build upon the skill set acquired during my undergraduate degree, the MA in Visual Communication provided me with the relevant platform and tools I needed to challenge, inform and develop my working practice further. Supported by a team of experienced tutors, enthusiastic workshop technicians and a broad range of facilities, students are continuously encouraged to take creative risks and to embrace the often daunting yet enriching and necessary journey behind the idea and design process, whether they work independently or collaboratively. Practical and theoretical research are at the heart and soul of the course, enabling its students to push their boundaries with confidence while positively influencing their working methods in ways they might have never anticipated before joining the course."*





# Professional Doctorate in Education (EdD)

**AWARDS:**  
Professional Doctorate in Education (EdD)

**LOCATION:**  
Newton Park campus

**FEES:**  
UK/EU Part-time: £2,165 for each year of study

**LENGTH:**  
This course is offered on a part-time basis, and you can study for up to six years

**KEY FEATURES:**  
Aimed at experienced professionals in all areas of education  
Taught by teams of practitioners, scholars, and researchers who are experts in their fields  
Particular areas of expertise include teacher education, professionalism, leadership, social justice, and education policy

**APPLICATIONS:**  
An online application can be made using the 'Apply Now' button on the course's webpage. For any admissions enquiries please contact:  
T: +44 (0)1225 876180  
E: [admissions@bathspa.ac.uk](mailto:admissions@bathspa.ac.uk)  
[www.bathspa.ac.uk/postgrad-apply](http://www.bathspa.ac.uk/postgrad-apply)

**ENQUIRIES:**  
For all enquiries please email [postgraduate@bathspa.ac.uk](mailto:postgraduate@bathspa.ac.uk)  
Course Director:  
Professor Charlotte Chadderton  
**FIND OUT MORE:**  
[www.bathspa.ac.uk/edd](http://www.bathspa.ac.uk/edd)



**This six-year part-time professional Doctorate in Education combines a three-year taught programme with a three-year piece of independent research and a thesis of 50,000 words.**

This course is aimed at professionals working in education or education-related fields. You'll be encouraged to think, write, and research critically, innovatively, and rigorously. You'll learn how to analyse, critique and innovate in education practice, policy and research. You'll be encouraged to challenge established ideas and concepts and develop your professional and academic skills to the highest level.

**COURSE STRUCTURE AND CONTENT**  
The EdD is a part-time course in two parts. The first, taught element, will take 3 years to complete, the second, independent research element will take 2-3 years.

The taught element contains six modules. Two modules will run per academic year, one per semester. This will also involve planning a piece of original research. You must pass the taught element of the course to move on to thesis stage.

Once the taught part of the course is complete, you will conduct an independent piece of empirical research which will make an original contribution to knowledge. This element will take 2-3 years. You will work with two supervisors who will guide your work, and you will produce a 50,000 word thesis.

The course will offer you the opportunity to engage with the latest research in professionalism, early childhood studies, social justice and inequalities in education, education policy, leadership in education, pedagogies, and education philosophy. All of this will be underpinned by a rigorous study of research methods and theories in education.

**ASSESSMENT**  
Each module is assessed via formative exercises and tasks, to include class discussions and group presentations. There will also be a summative assessment in the form of an assignment (5,000 words) which critically discusses the module content.

**ENTRY REQUIREMENTS**  
The EdD is designed for those who are already working in education in a range of contexts, both as professionals and practitioners.

Experience of postgraduate study is essential, preferably at master's level.

You will normally be expected to have at least three years' appropriate professional experience in the practice of policy or a related field. Previous experience of conducting research, or research methods training in the social sciences, is beneficial.

Three references are required. At least two of these should be academic references. Applicants will be expected to provide a research proposal, which will be assessed for originality, feasibility and rigour.

# The National Award for SENCo

## POSTGRADUATE CERTIFICATE IN SPECIAL EDUCATIONAL NEEDS COORDINATION

**AWARDS:**  
National Award for SENCo  
PGCert Special Educational Needs  
Coordination / NA SENCo

**LOCATION:**  
Newton Park and Corsham Court  
campuses

**FEES:**  
UK/EU Part-time: £2,340

**LENGTH:**  
The National Award for SENCo takes  
between 12 and 16 months to complete

**KEY FEATURES:**  
High quality, interactive programme  
delivered by specialists in the field  
  
Access additional mentor support from  
an experienced SENCo  
  
Integration of theory and practice to  
support role development

**APPLICATIONS:**  
An online application can be made using  
the 'Apply Now' button on the course's  
webpage. For any admissions enquiries  
please contact:  
  
T: +44 (0)1225 876180  
E: [admissions@bathspa.ac.uk](mailto:admissions@bathspa.ac.uk)  
[www.bathspa.ac.uk/postgrad-apply](http://www.bathspa.ac.uk/postgrad-apply)  
  
Please contact [cpdsenco@bathspa.ac.uk](mailto:cpdsenco@bathspa.ac.uk)  
for application guidance.

**ENQUIRIES:**  
For all enquiries please email  
[cpdsenco@bathspa.ac.uk](mailto:cpdsenco@bathspa.ac.uk)  
  
Course Director: Dr Helen Curran

**FIND OUT MORE:**  
[www.bathspa.ac.uk/pg-senco](http://www.bathspa.ac.uk/pg-senco)



The National Award for Special Educational Needs (SEN) Coordination is a mandatory award for all SENCos new to post. Bath Spa University endeavours to offer an exciting and interactive award which enables both new and aspiring SENCos the opportunity to develop and extend their knowledge and skills. Face to face sessions provide SENCos with the most up-to-date information regarding policy and practice to enable the development of this leadership role at a strategic level. The unique feature of the Bath Spa and Partners model is that we also provide SENCos with an allocated SENCo mentor for support. Mentors are experienced SENCos who have completed the course themselves and typically work within the SENCos' Local Authority.

**COURSE STRUCTURE AND CONTENT**  
The National Award for SENCo comprises of two 30 credit modules:

- The SENCo as a leader: from policy to practice. Leadership aspects including resource management and the development of effective working relationships with senior leaders are explored. The theory and practice of working with stakeholders will be explored, along with effective models of support and intervention.
- The role of the SENCo: provision for SEN. This module specifically examines provision for children with SEN, effective person centred planning and appropriate related provision. The effective use of data and finance as tools for planning for provision are studied, including the deployment of support staff.

**ASSESSMENT**  
The two modules are assessed through written assignments, which leads to a Postgraduate Certificate in Special Education Needs Coordination.  
  
In addition to completing the two modules you are required to complete a professional portfolio, to achieve the National Award for SENCo.



**ENTRY REQUIREMENTS**  
Applicants must be either:

- A teacher who is employed in a school as a new or experienced SENCo.
- A teacher who is employed in a school as an aspiring SENCo.

For both aspiring and new/experienced SENCos it is imperative that the SENCo has the support of a school to complete the National Award.

**YOUR FUTURE CAREER**  
The National Award for SENCo is also ideal for current teachers who are interested in working in the area of SEN. SENCos must achieve the award within three years.  
Those who complete the National Award for SENCo can accredit their prior learning towards the MA Inclusive Education.



# MA Inclusive Education

<b>AWARDS:</b> MA Inclusive Education	<b>LENGTH:</b> Full-time: 1 year Part-time: 2 years	<b>APPLICATIONS:</b> An online application can be made using the 'Apply Now' button on the course's webpage. For any admissions enquiries please contact: T: +44 (0)1225 876180 E: <a href="mailto:admissions@bathspa.ac.uk">admissions@bathspa.ac.uk</a> <a href="http://www.bathspa.ac.uk/postgrad-apply">www.bathspa.ac.uk/postgrad-apply</a>	<b>ENQUIRIES:</b> For all enquiries please email <a href="mailto:postgraduate@bathspa.ac.uk">postgraduate@bathspa.ac.uk</a> Course Director: Dr Helen Curran
<b>LOCATION:</b> Newton Park campus	<b>KEY FEATURES:</b> Develop knowledge and skills in inclusive education and SEN for expert practitioners  Explore the impact of new legislation and policy at a local and national level  Develop your professional practice as a leader within education		<b>FIND OUT MORE:</b> <a href="http://www.bathspa.ac.uk/pg-inclusive-education">www.bathspa.ac.uk/pg-inclusive-education</a>
<b>FEES:</b> UK/EU Full-time: £7,195 International: £13,300			

The MA in Inclusive Education focuses upon the issues within education which concern the inclusion of learners and its implications. These include philosophical, ethical and legal aspects which impact on the conduct of education in different settings. The concept of inclusion is challenging and wide ranging: modules in this programme problematize the idea of inclusion by providing opportunities for students to engage critically with the policy and practice of inclusive education.



## COURSE STRUCTURE AND CONTENT

The following modules are a selection of what is offered as part of the award:

Contemporary Issues in Inclusive Education explores how inclusion is exercised in education settings and how students can become agents of change at work by acquiring a deeper understanding of the barriers to inclusion. Taught sessions provide an understanding of the ways in which vulnerability and learners' additional needs impact on the climate of the classroom and the culture of a school or educational setting.

SEN and Inclusion: Autism Spectrum (Children) is designed for teachers, SENCOs and other professionals working with children and young people on the autism spectrum, and increasing their knowledge of the subject.

Identifying and Addressing Difficulties Learning Mathematics provides an introduction to the theory and practice of teaching learners with difficulties in learning mathematics.

English as an Additional Language (EAL) offers students the opportunity

to gain the knowledge and skills to make informed decisions about the learning and development of a child with English as an Additional Language (EAL).

Identifying and Supporting Learners with SpLD/Dyslexia. This module provides an introduction to the theory and practice of teaching learners with SpLD/Dyslexia. The module explores causal theories, initial assessment and social/emotional implications for learners.

You will also complete a final Dissertation.

There are also module options which enable you to explore an area of your own specific interest related to inclusive education, supported by your tutor.

## ASSESSMENT

Assessment takes a range of formats. This includes a range of written assignments, for example critical reviews of literature, reflective accounts as well as presentations and reflective commentaries.

## ENTRY REQUIREMENTS

You will need a first degree and will typically be working in an educational context. You should be interested in the inclusion of vulnerable learners and be able to demonstrate a strong drive to improve outcomes for learners.

Students who have completed the NA SENCo are able to accredit this prior learning (APL) towards the completion of the MA Inclusive Education. This route also enables students to gain the appropriate qualifications to apply for AMBDA.

## YOUR FUTURE CAREER

The MA is designed for those who are working in education as teachers or programme leaders as well as those who wish to learn more about this field and how it influences the way students (children, young people and adults) experience education in various national and international contexts.

The MA is ideal for teachers, specialist teachers, and those working in both mainstream and specialist provision.

# MA Education: Leadership and Management

<b>AWARDS:</b> MA Education: Leadership and Management
<b>LOCATION:</b> Newton Park campus
<b>FEES:</b> UK/EU Full-time: £7,195 International: £13,300

<b>LENGTH:</b> Full-time: 1 year Part-time: 2 years
<b>KEY FEATURES:</b> Opportunity to reflect on and challenge your professional experience Lively discussions on contemporary educational issues Afternoon classes

<b>APPLICATIONS:</b> An online application can be made using the 'Apply Now' button on the course's webpage. For any admissions enquiries please contact: T: +44 (0)1225 876180 E: admissions@bathspa.ac.uk www.bathspa.ac.uk/postgrad-apply
--

<b>ENQUIRIES:</b> For all enquiries please email postgraduate@bathspa.ac.uk Course Director: Dr Mahmoud Emira
<b>FIND OUT MORE:</b> www.bathspa.ac.uk/pg-education-leadership-and-management



**"To lead people, walk beside them. As for the best leaders, the people do not notice their existence ... When the best leader's work is done, the people say, 'We did it ourselves!'" – Lao Tsu, Chinese philosopher**

This course is designed for those who have experience of working in schools, colleges, universities or other educational providers and who seek to develop a better understanding of how educational leadership influences, and impacts upon, the experiences of staff and students. The course is also appropriate for those with an academic interest in studying educational leadership and management. Drawing on contemporary theory and research this course offers a critical understanding of leadership as a culturally based, social and ethical practice.

**COURSE STRUCTURE AND CONTENT**  
The MA comprises four 30 credit modules and a 60 credit dissertation.  
In the first trimester you'll gain a broad understanding of the context in which educational leaders operate through studying two core modules. Education and Society examines the place of education in contemporary societies and explores how educational reform is constructed and implemented to deliver social and economic change. Leadership in Practice examines the way that leadership is played out within educational settings through focussing on what leaders do to engage followers in order to bring about change within an ethical framework.  
In the second trimester you will take two further modules: Research Methods and Leading, Mentoring and Coaching.  
In the final trimester, you'll write a Dissertation of 15,000 words on an aspect of educational leadership that interests you. You'll be supported by a tutor and benefit from one-to-one tutorials.

**ASSESSMENT**  
There are no written exams on this course; each module is assessed through coursework.

**ENTRY REQUIREMENTS**  
You'll have a 2:2 (or above) bachelor's degree from a recognised higher education institution or a relevant professional qualification. Ideally you'll be working within an educational context and have some professional experience of leadership, either formally or informally, to inform your academic study.

**YOUR FUTURE CAREER**  
You'll graduate with practical and theoretical knowledge, that's well placed to apply for middle, senior or leadership roles in schools or other educational institutions. Many students on our educational leadership awards gain promotion within 12 months of completing the course.

**STUDENT PROFILE**  
**JON BARR**  
**MA EDUCATION: LEADERSHIP AND MANAGEMENT**

*"I wanted to broaden my understanding of educational leadership with a particular focus on the wider educational landscape in England. Bath Spa has helped me to understand master's level work at the same time as enabling and supporting me to pursue my own academic direction and approach to research and study. When choosing Bath Spa I felt confident that they would give me the room to pursue my own research direction. I received challenge and support with the completion of the projects I undertook. I was able to take part in dialogue with other students completing their MA at Bath Spa. There was a high quality of 1 to 1 conversation with my personal tutor which enabled me to reach master's level in the assignments I completed."*



# MA Education: Early Childhood Studies

**AWARDS:**  
MA Education: Early Childhood Studies

**LOCATION:**  
Newton Park campus

**FEES:**  
UK/EU Full-time: £7,195  
International: £13,300

**LENGTH:**  
Full-time: 1 year  
Part-time: 2 years

**KEY FEATURES:**  
Explores constructions of childhood  
In-depth study of children from birth to eight  
Foregrounds ethical, cultural and social perspectives of early childhood

**APPLICATIONS:**  
An online application can be made using the 'Apply Now' button on the course's webpage. For any admissions enquiries please contact:  
T: +44 (0)1225 876180  
E: [admissions@bathspa.ac.uk](mailto:admissions@bathspa.ac.uk)  
[www.bathspa.ac.uk/postgrad-apply](http://www.bathspa.ac.uk/postgrad-apply)

**ENQUIRIES:**  
For all enquiries please email [postgraduate@bathspa.ac.uk](mailto:postgraduate@bathspa.ac.uk)  
Course Director: Dr Lone Hattingh

**FIND OUT MORE:**  
[www.bathspa.ac.uk/pg-early-childhood-studies](http://www.bathspa.ac.uk/pg-early-childhood-studies)



Early Childhood Studies education is globally recognised as being crucial for laying the foundations for lifelong learning and development, as critical aspects of social, emotional and cognitive development are established in a child's early years.

During the course you'll develop your knowledge and understanding of how children develop and learn in social and cultural contexts. You'll be introduced to different pedagogical approaches, including international perspectives that will encompass a critical analysis of the constructions of childhood.

The course incorporates modules which will enhance your understanding and insights into developing exemplary educational provision for young children.

**COURSE STRUCTURE AND CONTENT**  
In your first trimester you'll study one award core module, Early Childhood: Education, Culture and Society. In addition, you'll complete the module Education and Society.  
In your second trimester you'll study the compulsory core module Research Methods in the Social Sciences, which introduces a range of qualitative and quantitative

methodologies and methods. In addition, you will take a second core module Perspectives of Outdoor Play which includes concepts of engagement with nature, space, place and education for sustainable development.  
In your third trimester you'll research and write your Dissertation. The dissertation enables you to study and research an aspect of early childhood education theory, policy or practice in-depth, whilst being guided by a specialist supervisor.

**ASSESSMENT**  
There are no written exams on this course; each module is assessed through coursework.

**ENTRY REQUIREMENTS**  
You will have a bachelor's degree from a recognised higher education institution. This may be in the field of education, or a related discipline.

**YOUR FUTURE CAREER**  
Governments worldwide are now making early childhood education a priority and increasing their investment in provision for young children. You'll acquire specialist expertise in an area of education that is rapidly expanding and opening up new career opportunities.

## STUDENT PROFILE TANYA CHAPPELL MA EDUCATION: EARLY CHILDHOOD STUDIES

"I chose to study at Bath Spa because of its high reputation for quality and focus on creativity. A highlight of the course was the support from Bath Spa staff within different areas of the Institute for Education to develop your own interests and focus within my area of study.  
The best thing about the course has been learning in depth knowledge of different theories and concepts across various academic disciplines that are relevant to contemporary Early Childhood studies.  
The course has given me the confidence to move further into teaching within the post-16 sector and enriched my knowledge base of Early Years education and childhood studies to apply best effective practice. Because of the course I am thinking about studying a PhD at Bath Spa University to develop the knowledge and skills acquired through the Masters."

# MA Counselling and Psychotherapy Practice

**AWARDS:**  
MA Counselling and Psychotherapy Practice

**LOCATION:**  
This programme is delivered via distance learning.

**FEES:**  
UK/EU Full-time: £7,195  
International: £13,300

**LENGTH:**  
Full-time: 1 year  
Part-time: 3 years

**KEY FEATURES:**  
Flexible study arrangements allowing you to choose from a range of accredited short modules or longer programmes of study

Flexible learning linked to your specialist interest in counselling and psychotherapy practice

Range of specialist and generic career-based module titles

**APPLICATIONS:**  
An online application can be made using the 'Apply Now' button on the course's webpage. For any admissions enquiries please contact:

T: +44 (0)1225 876180  
E: [admissions@bathspa.ac.uk](mailto:admissions@bathspa.ac.uk)  
[www.bathspa.ac.uk/postgrad-apply](http://www.bathspa.ac.uk/postgrad-apply)

**ENQUIRIES:**  
For all enquiries please email [postgraduate@bathspa.ac.uk](mailto:postgraduate@bathspa.ac.uk)  
Course Director: Rebecca Midwinter

**FIND OUT MORE:**  
[www.bathspa.ac.uk/pg-counselling-and-psychotherapy-practice](http://www.bathspa.ac.uk/pg-counselling-and-psychotherapy-practice)

The MA Counselling and Psychotherapy Practice (MA CPP) programme is suitable for counsellors and psychotherapists who have completed a recognised counselling or psychotherapy training qualification, and who are working or who have recently worked professionally as a counsellor or psychotherapist.

You will be working (or have recently worked) professionally as counsellors or psychotherapists. You will draw on your clinical practice and working experience to identify gaps in your professional knowledge; to deepen your theoretical knowledge and critical reflection, and engage in reflexive and reflective practice to enhance your professional practice.

Throughout the programme, you can influence and shape the direction of your learning focus. You are encouraged to become active, autonomous learners during your studies, developing your own original perspectives on the issues and topics discussed through wide reading and reflection on both your experience and the literature.

**COURSE STRUCTURE AND CONTENT**

The MA CPP gives you an academic qualification alongside your professional counselling training. This programme can be taken full time over 1 year or taken part-time over a period of up to 3 years.

The aims of the programme are to recognise and enhance understanding of good professional practice and deepen theoretical knowledge, to engage in evidence-based practice and research and to enhance skills of reflection and reflexivity and develop self-awareness to support Continued Professional Development.

All modules are completed through distance learning. Individual contact with a tutor is either face to face, by telephone or through online tutorials. There are also webinars/online seminars available. Contact could be individual or in groups.

**ASSESSMENT**  
A range of summative assessment tasks will be used to test the Intended Learning Outcomes in each module. You will be supported in your development towards summative assessment by appropriate formative exercises.

**ENTRY REQUIREMENTS**  
This programme is suitable for counsellors and psychotherapists who have completed a recognised counselling or psychotherapy training qualification, and who are working or who have worked professionally as a counsellor or psychotherapist.

Applicants with a recognised counselling or psychotherapy training qualification, taken within the last 5 years, can apply for up to a maximum of 60 credits Accredited Prior (Experiential) Learning (AP(E)L).

**YOUR FUTURE CAREER**  
The programme will give practising counsellors and psychotherapists an academic university-based higher degree qualification to complement your professional qualification. You will be equipped with the graduate attributes necessary to flourish in the global field of counselling and psychotherapy. You will be responsive to the changing landscape within your professional field, and able to adapt your own practice accordingly. You will be creative thinkers through being curious and innovative in your own practice and be able to understand and manage complexity, diversity and change.



**STUDENT PROFILE**  
**RUTH SMITH**  
**MA COUNSELLING AND PSYCHOTHERAPY PRACTICE**

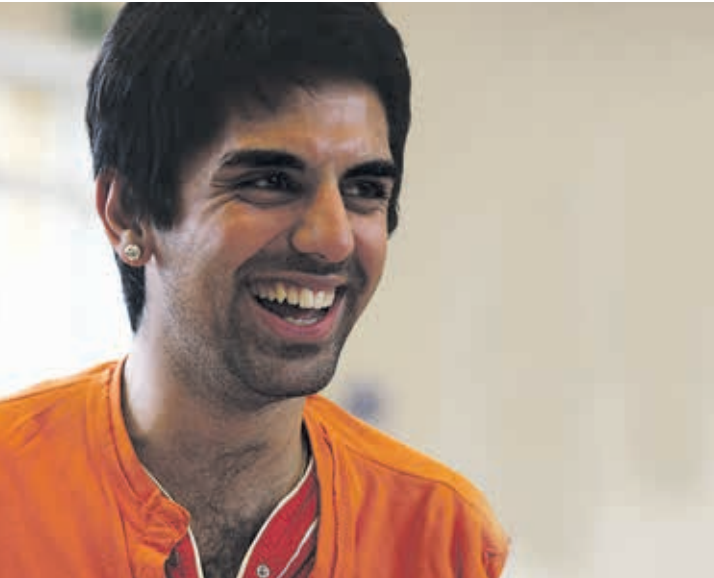
*"The MA in Counselling and Psychotherapy Practice offers wonderful support, from the course lead to the administrative staff and the library resources. The flexibility of the course and being able to choose my own topic within counselling and psychotherapy was a significant advantage over other courses. Once I had an opportunity to speak to the course leader I was convinced it was the right course for me.*

*The biggest highlight was having the opportunity to take the topic I was interested in and study it in depth. It also ignited a passion for study and my time at Bath Spa gave me a solid foundation to pursue further research. I feel that my knowledge as a counsellor has been deepened due to this MA which has benefited my clinical practice. It has also opened up other career avenues such as lecturing, training and research which I had not considered before commencing the course."*



# MA Professional Practice

<b>AWARDS:</b> MA Professional Practice	<b>LENGTH:</b> Full-time: 1 year Part-time: up to 5 years	<b>APPLICATIONS:</b> An online application can be made using the 'Apply Now' button on the course's webpage. For any admissions enquiries please contact: T: +44 (0)1225 876180 E: admissions@bathspa.ac.uk www.bathspa.ac.uk/postgrad-apply	<b>ENQUIRIES:</b> For all enquiries please email postgraduate@bathspa.ac.uk Course Director: Róisín Ní Mhócháin
<b>LOCATION:</b> Newton Park and Corsham Court campuses	<b>KEY FEATURES:</b> Designed for busy working professionals seeking to develop their own practice Allows you to study educational topics in depth Offers flexible learning opportunities through a range of modules		<b>FIND OUT MORE:</b> www.bathspa.ac.uk/pg-professional-practice



The MA in Professional Practice is aimed at busy working professionals who wish to develop their own practice. It is aimed at those new to the profession as well as those who are experienced in their field. It aims to help individuals recognise and defend good professional practice and to become competent in analysing, evaluating and restructuring their practice in changing circumstances through engagement with evidence-based practice.

**COURSE STRUCTURE AND CONTENT**  
The master's programme is flexible and enables you to choose from a variety of modules to suit your working circumstances and professional practice. It will enable depth of understanding and knowledge in areas of practice with which you are already familiar and develop new areas of practice if required. You will also engage with, and learn about, research methods, either as a taught module or as online learning. This will lead into the dissertation where an extended research project culminating in a 15,000 word thesis will be completed.



**ASSESSMENT**  
There are no written exams and each module is assessed by coursework. Sometimes assessment is by verbal presentation.

**ENTRY REQUIREMENTS**  
You are expected to have a good first degree, although we often accept applicants with appropriate experience that we consider sufficient and comparable.

**YOUR FUTURE CAREER**  
Many of our graduates seek new career paths to educational management, training or in related fields. Some wish to continue their expertise in their professional practice and gain a broader and deeper view of education. Others wish to take their studies further – to PhD level – and seek eventual employment in an academic institution.

# PG Cert Higher Education (PGCHE)

**AWARDS:**  
Postgraduate Certificate (PG Cert) in Higher Education Fellowship of the Higher Education Academy (FHEA) status

**LOCATION:**  
Newton Park campus

**FEES:** UK/EU Part-time: £2,400

Fees are funded by the university for those teaching at Bath Spa University

Discounts are available for teachers at Partner Colleges.

**LENGTH:**  
Part-time: 2 years  
Starting in either September or February

**KEY FEATURES:**  
Work based learning and development for new academics and educators in Higher Education towards recognised accredited qualifications and professional status (Fellowship of the Higher Education Academy)

Learning activities and assessment tasks that have a practical orientation based on your teaching practice

High level of individual tutorial, mentoring, and small group support and discussions

**APPLICATIONS:**  
Please contact the course team to discuss your teaching practice and eligibility prior to application. For any admissions enquiries please contact:

T: +44 (0)1225 876180  
E: admissions@bathspa.ac.uk  
www.bathspa.ac.uk/postgrad-apply

**ENQUIRIES:**  
For all enquiries please email [hep@bathspa.ac.uk](mailto:hep@bathspa.ac.uk)

Course Director: Dr. Giles Martin

**FIND OUT MORE:**  
[www.bathspa.ac.uk/education](http://www.bathspa.ac.uk/education)



The Postgraduate Certificate in Higher Education (PGCHE) is designed to support the initial professional development of teaching in higher education for those new to the field and who are actively engaged in teaching students at university level.

The programme aims to develop confident, flexible, competent teaching practitioners in higher education who can facilitate and support learning in a range of settings, and who engage in self-development through critically reflective practice and scholarship and evidence-based practice to enhance their teaching practice.

The programme is accredited with Advance HE against the UK Professional Standards Framework (UKPSF) to award Fellowships of the Higher Education Academy, and aligned with the core knowledge and skills, assessment practices, and expectations of the Academic Professional Apprenticeship.

**COURSE STRUCTURE AND CONTENT**

The programme is part-time taken over 2 years and primarily based around work-based learning – you must be engaged in teaching in higher education. The modules help develop practices in teaching and course design and allow for adaption to your individual development needs and current skills. The programme is designed around your practice in teaching and learning, and developing your critical reflection of this. You'll also enhance your knowledge and understanding of pedagogy, literature and scholarship, and engagement with your colleagues in order to learn from the experience of others.

Modules include Teaching and Supporting Learning in Higher Education in year one, followed by Course Design and Development in Higher Education, and Technology and Innovation in Higher Education in year two.

Core teaching sessions normally take place on Wednesday afternoons, or on intensive days during University vacation periods. Class hours are approximately 30 per year.

**ASSESSMENT**

The modules use a range of assessment methods including reflective writing, portfolios of evidence, and electronic media. The assessments are designed to provide flexibility in demonstrating both the professional standards and level 7 criteria.

**ENTRY REQUIREMENTS**

The programme is designed primarily for those in a lecturer or equivalent role, and to be eligible you must be teaching in a higher education context during the course.

Students are normally expected to have a good undergraduate degree, however, enrolment is possible for those who have taken other routes into HE teaching, subject to an interview prior to registration.

There are also specific eligibility criteria for each module:

*Teaching and Supporting Learning in Higher Education* – you must have at least 20 hours of teaching and learning activity involving direct engagement with higher education students (level 4 upwards) over the period of the module (1 year). It's possible to study this module on its own, to either exit with 30 credits and AFHEA status or continue to study another option to gain a PG Cert or higher qualification.

*Course Design and Development in Higher Education* – you must have module level leadership responsibilities i.e. for the design and development choices for a module. This can be joint responsibility.

**YOUR FUTURE CAREER**

The PGCHE qualification and FHEA status are regarded as the de-facto teaching qualifications for new academics in Higher Education in the UK, and are often compulsory for new academics at UK HE institutions. The programme provides nationally recognised and accepted certification of your professional practice as a teacher. It's designed to provide a thorough grounding and start to teaching in HE for an academic career, with individual and peer support that enable personalised development and clear links to your ongoing development as a teacher, with a focus on your ability to develop and adapt for the future.

Our MA Professional Practice in Higher Education and EdD Professional Doctorate in Education programmes provide multiple options for continued study and higher qualifications for various topics relevant to academic practice and higher education.



# MA Professional Practice in Higher Education

<b>AWARDS:</b>
MA Professional Practice in Higher Education
<b>LOCATION:</b>
Newton Park and Corsham Court campuses
<b>FEES:</b>
UK/EU Full-time: £7,195
International: £13,300
<b>LENGTH:</b>
Part-time: 3-5 years

<b>KEY FEATURES:</b>
Opportunities for accredited professional development designed to meet the needs of those working in higher education contexts
Undertake professional development at your own pace. We offer flexible patterns of enrolment, course delivery and credit accumulation
Learning activities and assessment tasks have a practical orientation and can be tailored to reflect the needs of your work environment

<b>APPLICATIONS:</b>
Please email the programme team at <a href="mailto:hep@bathspa.ac.uk">hep@bathspa.ac.uk</a> to discuss your work in Higher Education and desired study in the first instance. For any admissions enquiries please contact:
T: +44 (0)1225 876180
E: <a href="mailto:admissions@bathspa.ac.uk">admissions@bathspa.ac.uk</a>
<a href="http://www.bathspa.ac.uk/postgrad-apply">www.bathspa.ac.uk/postgrad-apply</a>

<b>ENQUIRIES:</b>
For all enquiries please email <a href="mailto:hep@bathspa.ac.uk">hep@bathspa.ac.uk</a>
Course Director: Dr Giles Martin
<b>FIND OUT MORE:</b>
<a href="http://www.bathspa.ac.uk/pg-professional-practice-in-he">www.bathspa.ac.uk/pg-professional-practice-in-he</a>



The Professional Practice in Higher Education (PPHE) programme will help you, as a staff member or research student, to meet the key challenges of working in the rapidly changing world of higher education, whilst gaining credit and postgraduate qualifications for your professional development.

These challenges – of teaching, supporting student learning, employability, sustainability, new technologies, team management, enterprise, quality assurance and external accountability – range across the whole business of higher education, and can rarely be addressed in isolation. They raise many questions about how best to enhance teaching and research within particular contexts, and about how managers and administrators can improve the effectiveness and efficiency of current practices, not least in terms of addressing students’ needs and aspirations, enriching their learning experiences, and raising the enduring value of their learning outcomes. By sharing ideas, knowledge and expertise about our professional practices we can both

deepen our understanding of the challenges we face, and realise opportunities to make improvements through innovations and the adoption of best practices.

This course is a flexible master's level programme designed to support continued professional development, with the possibility of both intermediate qualifications and external (HEA) accredited status (for those with suitable teaching practice in HE only).

**COURSE STRUCTURE AND CONTENT**

The programme is based upon a credit system; you'll select modules and patterns of study to suit your needs and interests. All modules are credit rated and lead to the following possible exit qualifications:

Postgraduate Certificate require 60 credits from any combination of modules. A further 60 credits will give you your Postgraduate Diploma. Finally, the master's award requires 180 credits in total including a 30 credit on research methods, plus 60 for a Research Project/Dissertation.

Most modules (subject to availability) can be taken in any order

and in any combination, though we would advise new teachers (including professional service staff who engage in suitable teaching) to include the Teaching and Supporting Learning in Higher Education module among their initial options. A small number of modules are available only to those with specific teaching or research responsibilities. The Master's Project or Dissertation should be taken as the final module. Tutorials will be available to help you plan your course of study.

**ASSESSMENT**

Assessment for all modules is by coursework, based upon the completion of assignments designed to promote understanding, enhancement and/or application of professional practices in higher education for your own practice.

**ENTRY REQUIREMENTS**

You must be working, or a research student, in a Higher Education Institution (including HE in FE) during your part time study on this course. Activities and assessment are based on your current HE professional practice. This includes both academic and professional services staff.

You'll normally be required to possess an undergraduate degree awarded by a UK higher education institution, or an equivalent qualification from overseas. Those that don't have this, but who have at least two years of work experience relevant to the programme are also welcome to apply, and will be invited to attend an interview.

If you already hold a qualification such as a PGCert in HE (learning and teaching or academic practice), or a fellowship of the Higher Education Academy, the course can build on this towards a higher qualification.

**YOUR FUTURE CAREER**

The PPHE programme is designed to support the development of both academic and professional staff, teaching, managing or supporting HE students, at a time when evidence of professional development is increasingly expected of all staff, not least for new appointments and promotions.

Some of the modules are accredited with the Higher Education Academy meaning you have the opportunity to gain Associate/Fellowship of the Higher Education Academy (A/FHEA), a nationally transferable professional status.

New academic staff at Bath Spa will take a core selection of the modules to gain a specific PGCHE qualification and FHEA status as part of their contract, but are welcome to continue with the PPHE programme to gain higher qualifications, as are those who have gained HEA fellowships through PRO-SPACE or similar recognition schemes.





# MA Creative Writing

<b>AWARDS:</b> MA Creative Writing	<b>LENGTH:</b> Full-time: 1 year	<b>APPLICATIONS:</b> An online application can be made using the 'Apply Now' button on the course's webpage. For any admissions enquiries please contact: T: +44 (0)1225 876180 E: admissions@bathspa.ac.uk www.bathspa.ac.uk/postgrad-apply	<b>ENQUIRIES:</b> For all enquiries please email postgraduate@bathspa.ac.uk Programme Leader: Prof Gavin Cologne-Brookes Course Director: Richard Kerridge
<b>LOCATION:</b> Corsham Court campus	<b>KEY FEATURES:</b> Excellent record of helping students achieve publication  Widely regarded as one of the best courses of its kind  Taught by an extremely strong team of publishing writers		<b>FIND OUT MORE:</b> www.bathspa.ac.uk/pg-creative-writing
<b>FEES:</b> UK/EU Full-time: £7,600 International: £14,800			

This course will help you to bring a novel, book of poems, book of short stories or work of nonfiction as near to publishable quality as possible. Working with tutors and other writers on the course, you will develop your writing and build up a substantial body of work. Weekly workshops are taught by a strong team of published writers, and there are regular visits by literary agents, publishers, magazine editors and broadcasters, as well as other writers.

Due to the reputation of the MA in Creative Writing, we are able to recruit excellent students who form an exciting and mutually supportive community of writers every year.

**COURSE STRUCTURE AND CONTENT**  
In the first and second trimester Professional Skills provides intensive group discussion and some plenary lectures. You will bring short pieces of writing to workshop groups consisting of a tutor and usually no more than eight other students.  
Each context module explores connections between your creative writing and the wider world as represented by a theme or genre. Seminars are divided between considering set texts and workshopping your creative writing. You will take a context module in trimester one and another in trimester two.  
In trimester three, The Manuscript will be taught by means of one-to-one tutorials. This is the culmination of the course – the book, or substantial part of a book.

**ASSESSMENT**  
You will be assessed entirely by coursework: mainly creative writing, plus two short essays, a manuscript proposal and a short commentary on the manuscript in progress.

**ENTRY REQUIREMENTS**  
Students are normally expected to have a strong first degree in English Literature, Creative Writing or a related subject. We offer places on the course on the basis of your portfolio of creative writing and an interview. We are looking for writers of prose fiction, poetry or literary nonfiction.

**YOUR FUTURE CAREER**  
Current or former students have been awarded excellent contracts for novels; been long-listed for the Man Booker Prize, Orange Prize, Costa Prize and the Guardian First Book Award; received the Betty Trask Prize, Manchester Book Award and a W.H. Smith New Talent Award, and reached the best-seller lists.



Publications from MA Creative Writing students, staff and graduates

# MA Scriptwriting

**AWARDS:**

MA Scriptwriting

**LOCATION:**

Corsham Court campus

**FEES:**

UK/EU Full-time: £7,395  
International: £14,300

**LENGTH:**

Full-time: 1 year

**KEY FEATURES:**

Weekend workshops at Corsham Court campus

Taught by acclaimed industry professionals – working practitioners who continue to love what they do

Practical project leading to a showcase presentation

**APPLICATIONS:**

An online application can be made using the 'Apply Now' button on the course's webpage. For any admissions enquiries please contact:

T: +44 (0)1225 876180  
E: admissions@bathspa.ac.uk  
www.bathspa.ac.uk/postgrad-apply

**ENQUIRIES:**

For all enquiries please email postgraduate@bathspa.ac.uk  
Course Director: Ursula Sarma

**FIND OUT MORE:**

www.bathspa.ac.uk/pg-scriptwriting

MA Scriptwriting is an intensive, practical course designed to produce professional writers and compelling scripts. It will take your writing to the highest level, and allow you to develop clear strategies for professional success. With a combination of expert guidance and peer-group workshopping, we encourage you to develop your unique voice while meeting the demands of a highly competitive industry.

We cover all media, including theatre, radio, film and television, and offer extensive training in professional skills. By the end of the course, you'll have a comprehensive portfolio of original work, a finished script to professional standards, industry connections and a fully realised showcase presentation.

**COURSE STRUCTURE AND CONTENT**

In Dramatic Structure, you'll learn the key components of a script, including structure, characterisation, visual storytelling and dialogue.

Writing for Theatre and Radio is a comprehensive guide to writing for these important media.

Develop your professional writing career in Professional Skills. Learn to prepare proposal documents, to pitch ideas, and to make connections in the industry.

Writing for the Screen is an in-depth course in writing for film and television.

In Final Script, you'll prepare a calling card script in the medium of your choice. You'll also complete your Showcase presentation where you'll write and produce a finished 15 minute piece in any narrative media for public presentation.

**ASSESSMENT**

You'll be assessed by coursework and practical presentation.

**ENTRY REQUIREMENTS**

You'll have a good first degree or professional training in acting, theatre, television or film. We also accept individuals with equivalent life experience.

**YOUR FUTURE CAREER**

Students have gone on to have their work produced and some have even managed to do this while still completing their MA. Others have found work within the script departments of TV/film and theatre companies while others work as script readers, theatre/film reviewers and as creative writing tutors.

**STUDENT PROFILE  
LAWRENCE GUY  
MA SCRIPTWRITING**

*"I chose the MA in Scriptwriting as I wanted to be pushed in all aspects of my writing and the course has certainly done this, I think this is really good preparation for life working as a scriptwriter. The connections that I have made through the course has given me confidence to take the next step in my career.*

*I decided on Bath Spa due to the great course with inspirational writers at its core. I would say to prospective students, go in with an open mind about what kind of writer you are.*

*The course opens you up to the wide range of possibilities available to you as a scriptwriter and you might surprise yourself."*





# MA Travel and Nature Writing

**AWARDS:**  
MA Travel and Nature Writing

**LOCATION:**  
The course is low residency, so apart from the three residential weeks you'll be taught online.

**FEES:**  
UK/EU Full-time: £7,395  
International: £14,300

**LENGTH:**  
Full-time low residency: 1 year  
OR Part-time low residency: 2 years

**KEY FEATURES:**  
Based on actual experiences in the field, including encounters with places, people and wildlife.  
  
Provides context of the history, background and genres of travel and nature writing over time.  
  
Develop your sense of self as a writer to help release your potential.

**APPLICATIONS:**  
An online application can be made using the 'Apply Now' button on the course's webpage. For any admissions enquiries please contact:  
T: +44 (0)1225 876180  
E: [admissions@bathspa.ac.uk](mailto:admissions@bathspa.ac.uk)  
[www.bathspa.ac.uk/postgrad-apply](http://www.bathspa.ac.uk/postgrad-apply)

**ENQUIRIES:**  
For all enquiries please email [postgraduate@bathspa.ac.uk](mailto:postgraduate@bathspa.ac.uk)  
Course Directors: Stephen Moss

**FIND OUT MORE:**  
[www.bathspa.ac.uk/pg-travel-and-nature-writing](http://www.bathspa.ac.uk/pg-travel-and-nature-writing)

Do you enjoy writing about people, places and wildlife? Are you interested in environmental issues in Britain and around the world? Would you like to be published, and make a living as a travel or nature writer? Then this course is for you.

The course focuses on learning to write from your own experience in the field. You'll develop your writing skills and techniques, learn from established writers, and examine the history, context and genres of travel and nature writing.

By meeting practitioners – writers, editors, agents and publishers – you'll gain a unique insight into the professional skills you require to get your writing published.

This low-residency course allows you to be based wherever you wish, so you can pursue your academic work while maintaining your current lifestyle. It can be taken full-time over one year, or part-time over two.

We aim to give you an understanding of issues and approaches to the representations of peoples, other species, habitats, places, cultures and environments in various kinds of writing. You'll graduate with the ability to apply what you've learnt to your own professional practice.

**COURSE STRUCTURE AND CONTENT**  
Writing in the Field is a broad introduction to the skills and techniques required to write from personal experience.  
  
Context, History and Genres in Travel and Nature Writing gives an overview, both broad and focused, on the key developments in the travel writing and nature writing genres.  
  
In Advanced Travel and Nature Writing, you'll develop new ways of writing about the world, and be encouraged to go outside your comfort zone in your choice of subjects, styles and formats.  
  
Professional Skills in Travel and Nature Writing is a practical guide to getting your work published across a range of different media and outlets.  
  
In A Portfolio of Travel and Nature Writing, you'll develop a 20,000 words portfolio of your best work, together with a reflective diary of your progress.

**ASSESSMENT**  
You'll be assessed through a combination of formative and summative assessments. This will include creative writing pieces, critical and analytical essays, presentations and a broad portfolio of your writing.

**ENTRY REQUIREMENTS**  
Ideally you should have a first degree (e.g. BA/BSc), but this is not compulsory, depending on your other experience.

**YOUR FUTURE CAREER**  
The course is designed to introduce students to various travel and nature writing publishing opportunities and prepare them for the submission of their own work. It will also equip them with the practical and business skills to operate as freelance writers.



**STUDENT PROFILE**  
**ANITA ROY**  
**MA TRAVEL AND NATURE WRITING**

"Having worked for several publishing houses both in the UK and India over the past 30 years, I am now a freelance writer and editorial consultant. I write a column for The Hindu Business Line newspaper in India, and am currently working on two books: creative non-fiction, and a young adult novel.

I chose to study the MA Travel and Nature Writing because I wanted to develop my creative writing skills and awareness of the natural world. The course helped to increase my understanding of (and networking within) the current UK publishing world, after having lived abroad for 20 years."

# MA Writing for Young People

**AWARDS:**  
MA Writing for Young People

**LOCATION:**  
Corsham Court campus

**FEES:**  
UK/EU Full-time: £7,600  
International: £14,800

**LENGTH:**  
Full-time: 1 year  
Part-time: 2 years

**KEY FEATURES:**  
Taught by published writers for young people. Excellent links with authors, agents and publishers, and a programme of visiting speakers

Annual prize for the 'most promising writer for young people' awarded by a leading literary agent

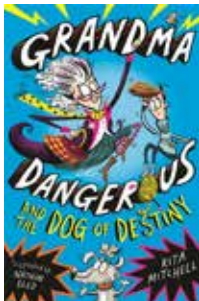
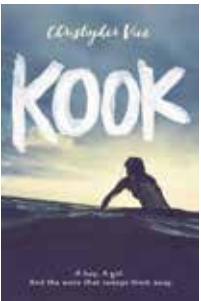
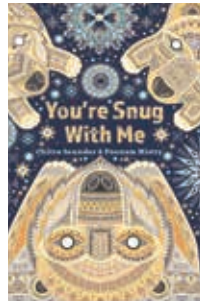
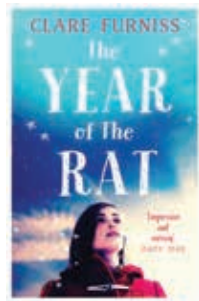
Excellent track record of graduates achieving publication

**APPLICATIONS:**  
An online application can be made using the 'Apply Now' button on the course's webpage. For any admissions enquiries please contact:

T: +44 (0)1225 876180  
E: [admissions@bathspa.ac.uk](mailto:admissions@bathspa.ac.uk)  
[www.bathspa.ac.uk/postgrad-apply](http://www.bathspa.ac.uk/postgrad-apply)

**ENQUIRIES:**  
For all enquiries please email [postgraduate@bathspa.ac.uk](mailto:postgraduate@bathspa.ac.uk)  
Course Director: Dr Julia Green

**FIND OUT MORE:**  
[www.bathspa.ac.uk/pg-writing-for-young-people](http://www.bathspa.ac.uk/pg-writing-for-young-people)



This specialist creative writing MA is designed for writers for children, teenagers and young adults who aim to complete a novel, series of picture books or shorter stories for young children. It is a practical course, taught by experienced lecturers who are all published children's writers and/or industry professionals.

The course is for writers for children of all ages, from the picture-book age through to young adult (YA). Prose fiction is likely to be the main area studied, but you will have the chance to look at writing in all forms, including poetry, picture book texts and narrative non-fiction for young people.

The course supports you to create a significant body of writing, with practical plans for its place in the real world of publishing. It is based on the principle that most writers learn and benefit from working closely with their fellow writers, in a disciplined supportive setting, and with tutors who are practising and published writers in their field. Most of our students aim to complete a novel by the end of the MA.

**COURSE STRUCTURE AND CONTENT**  
In the first trimester's Writing Workshop you'll explore a variety of forms of writing, gaining a sense of different age ranges and styles of writing and experimenting with your own writing. The context module is Writing for Young People: Forms, Ages and Stages.

In the second trimester, you'll be asked to choose your area of writing and explore it in more depth in the Writing Workshop Module. The second trimester's Context Module is Contemporary Children's Publishing.

In the third trimester, you'll continue to write your work-in-progress, developing a manuscript as near to publishable quality as possible. The manuscript may be a novel, picture book texts, or a collection of stories for younger people.

**ASSESSMENT**  
The assessed coursework for each Writing Workshop is a folder of creative writing plus a short reflective commentary. The assessed coursework for Context Module One is an essay and a folder of creative writing, and for Context Module Two is an article, book proposals, and other tasks related to the children's publishing industry. The manuscript is 35,000-40,000 words, or the equivalent in stories for younger children or picture book texts.

**ENTRY REQUIREMENTS**  
Normally, but not invariably, you will have a degree that may be in subjects other than Creative Writing.

**YOUR FUTURE CAREER**  
More than thirty-five of our MA Writing for Young People graduates have achieved publication deals with a range of different children's publishers, and many more graduates have secured literary agents. Other graduates have subsequently taught Creative Writing at university level. Some have combined their writing with careers in journalism, teaching, publishing, television etc.

## STUDENT PROFILE NIZRANA FAROOK MA WRITING FOR YOUNG PEOPLE

"I finished the MA in Writing for Young People at Bath Spa University in September 2017. Since then I've found an agent, got a book deal, and am now in the initial stages of writing my second book. I chose the Writing for Young People course as I researched lots of writing courses, and for me Bath Spa provided the most practical and industry-oriented MA of all. All the modules sounded not just interesting, but directly beneficial to a career in writing.

The highlight of my time on the course has to be the friendships I made. All the students were fully committed to writing, so I was surrounded by a warm and inspirational group of people in all my classes.

I don't have a writing background, so every module provided me with something useful to take away. The context modules gave me the practical know-how to develop and sustain a career in children's writing, and the regular workshops were invaluable in showing me how to mould my stories into the best I could make them."



# MA Children's Publishing

**AWARDS:**  
MA Children's Publishing

**LOCATION:**  
Corsham Court campus

**FEES:**  
UK/EU Full-time: £7,395  
International: £14,300

**LENGTH:**  
Full-time: 1 year  
Part-time: 2 years

**KEY FEATURES:**  
Creative, studio-based, practical course

Unique specialist focus on print and innovative digital publications for national and international markets

Excellent opportunities for industry collaboration and personal career development

**APPLICATIONS:**  
An online application can be made using the 'Apply Now' button on the course's webpage. For any admissions enquiries please contact:

T: +44 (0)1225 876180  
E: [admissions@bathspa.ac.uk](mailto:admissions@bathspa.ac.uk)  
[www.bathspa.ac.uk/postgrad-apply](http://www.bathspa.ac.uk/postgrad-apply)

**ENQUIRIES:**  
For all enquiries please email [postgraduate@bathspa.ac.uk](mailto:postgraduate@bathspa.ac.uk)

Course Director: Dr Laura Little

**FIND OUT MORE:**  
[www.bathspa.ac.uk/pg-childrens-publishing](http://www.bathspa.ac.uk/pg-childrens-publishing)



**STUDENT PROFILE**  
**ALICE DAINY**  
**DESIGN ASSISTANT,**  
**IGLOOBOOKS (PART OF BONNIER PUBLISHING UK)**

*"Studying Children's Publishing at Bath Spa University made me realise I wanted to work on children's books – and that's what I'm doing now."*

Children's and Young Adult books are internationally successful, high-growth areas of publishing in terms of innovation, revenues and employment.

This creative, industry-focused course offers a deep and immersive learning experience across editorial, marketing, rights and contracts, design and production. Additionally, it will cover business and editorial strategy, audience and user experience, digital product development, collaboration and project management, along with specialist careers coaching and work experience opportunities.

This course has been carefully designed to offer each student the flexibility to tailor their work in modules and a final extended project to their own interests and ambitions.

Students have access to up-to-date information from industry speakers and field trips to key events, which might include the Bath Children's Literature Festival, the London International Book Fair and the Bologna Children's Book Fair.

**COURSE STRUCTURE AND CONTENT**  
You'll explore the industry across print and digital, experiment with the relationship between form and content, and develop the skills to create your own original publications.

You will learn about the distinctive nature of children's and YA books in the context of the international publishing business. Visiting industry experts will discuss the latest developments in a wide range of specialist areas from rights to digital marketing; commissioning strategy to working with illustrators.

**ASSESSMENT**  
You'll be assessed through coursework and continuous assessment. You'll present creative and strategic industry project reports and pitches, publication samples, industry-standard documentation, reflective writing and critical essays.

**ENTRY REQUIREMENTS**  
We're looking for enthusiastic and motivated students who are interested in developing a career in children's publishing. We value creativity, imagination, initiative and a willingness to try new things. We usually require candidates to have a good first degree (2:1 or above) in any academic subject. You may be considered without a first degree, if you can demonstrate considerable relevant experience.

**YOUR FUTURE CAREER**  
Specialist careers coaching is offered to all students on this course. MA Children's Publishing graduates will leave with a unique skillset and experience. They will go into a wide range of roles within the publishing industry such as editorial, design and production, and marketing. Transferable skills will make you attractive to recruiters in digital content development, digital marketing, merchandising, education; you might set up your own businesses or continue your studies at PhD level.

# MA Crime and Gothic Fictions

<b>AWARDS:</b> MA Crime and Gothic Fictions	<b>LENGTH:</b> Full-time: 1 year Part-time: 2 years	<b>APPLICATIONS:</b> An online application can be made using the 'Apply Now' button on the course's webpage. For any admissions enquiries please contact:  T: +44 (0)1225 876180 E: admissions@bathspa.ac.uk www.bathspa.ac.uk/postgrad-apply	<b>ENQUIRIES:</b> For all enquiries please email postgraduate@bathspa.ac.uk  Course Director: Dr Fiona Peters
<b>LOCATION:</b> Corsham Court campus	<b>KEY FEATURES:</b> The only UK MA programme to integrate the study of both Crime Fiction and Gothic  Interdisciplinary and international in its approach to both genres  Led by tutors with established international reputations in their respective fields		
<b>FEES:</b> UK/EU Full-time: £7,195 International: £13,300			<b>FIND OUT MORE:</b> www.bathspa.ac.uk/pg-crime-and-gothic-fictions



The MA Crime and Gothic Fictions will introduce you to the advanced study of two popular genres that have entertained and informed culture from the nineteenth century to the present day. You'll explore the ways crime and gothic enrich each other, focussing on both equally during the taught element of the MA. We'll give you the opportunity to specialise for your final dissertation, if so desired.

**COURSE STRUCTURE AND CONTENT**  
The programme is deliberately international and interdisciplinary. You'll study an imaginative choice of texts from Britain, Europe and the Americas, as well as investigating cutting-edge research and relevant theory.  
You'll be taught the histories of the two genres, to ensure you have a good grounding, before moving on to consider contemporary and international examples from both genres. The programme will help strengthen your skills in comparison and criticism across genres, while allowing you to specialise in the genre of your choice.

**ASSESSMENT**  
Modules are formally assessed primarily by essay, with the exception of the Research Methods module, which includes a bibliographical element.  
Informal assessment may take the form of diagnostic essays, presentations and other exercises designed to enhance your research and presentation skills. The Dissertation module includes an assessed research proposal. There are no examinations.

**ENTRY REQUIREMENTS**  
You are normally expected to have a strong first degree in a related subject. We're looking for students who appreciate the complexity and challenging nature of so-called popular texts and genres.  
We value interdisciplinarity and an awareness of the international nature of both crime fiction and the Gothic. An ability to appreciate the contemporary, as well as historical, implication of both genres is an important trait we look for in candidates.

**YOUR FUTURE CAREER**  
Career opportunities for graduates with an MA in Crime and Gothic Fictions include working in cultural research and education; academic and fictional publishing; genre-related film, TV, and other media; literary journalism; dark tourism and the Gothic heritage industry.











# MA/MRes Composition

**AWARDS:**  
MA/ MRes Composition  
Postgraduate Diploma (PG Dip)  
Composition  
Postgraduate Certificate (PG Cert)  
Composition

**LOCATION:**  
Newton Park campus

**FEES:**  
UK/EU Full-time: £7,395  
International: £14,300

**LENGTH:**  
Full-time: 1 year  
Part-time: 2 years

**KEY FEATURES:**  
Develop your unique compositional voice through working with experienced composers and creative practitioners  
Hear your music played by professional musicians and fellow students  
Professionalise your work and understand current contexts for new music

**APPLICATIONS:**  
An online application can be made using the 'Apply Now' button on the course's webpage. For any admissions enquiries please contact:  
T: +44 (0)1225 876180  
E: admissions@bathspa.ac.uk  
www.bathspa.ac.uk/postgrad-apply

**ENQUIRIES:**  
For all enquiries please email  
postgraduate@bathspa.ac.uk  
Course Director: James Saunders

**FIND OUT MORE:**  
www.bathspa.ac.uk/pg-composition

Studying Composition at Bath Spa University will develop your skills as a composer and deepen your understanding of current new music contexts, both artistically and professionally.

Through weekly seminars and tutorials, supported by workshops with musicians, you'll work on your creative and technical skills, commenting critically on your own and others' work.

You'll have opportunities to collaborate with other creative artists, such as choreographers, filmmakers, and theatre practitioners through joint projects and seminar discussion. These developments in your creative practice are supported by practical consideration of your professional and academic skills.

The MA and MRes Composition pathways offer a different emphasis. MRes Composition provides an opportunity to conduct an extended, focused composition project combining both creative work and academic research. MA Composition provides a space to explore a wider range of approaches and to experiment with new ideas. Composers on both pathways are taught together, and work with the wider Music and Performing Arts community.

**COURSE STRUCTURE AND CONTENT**

We'll meet with you on a one-to-one basis through weekly tutorials to help develop your work. This support focuses on technical and aesthetic development, and we'll work with you on specific questions arising from your current project and its wider context.

We'll discuss broader issues with you and the other MA composers through weekly seminar sessions. These can include case studies of

particular composers or approaches, technical work in relation to specific compositional problems, or exploration of professional contexts.

For specific composition projects we organise rehearsals and workshops with visiting professional musicians and fellow students.

**ASSESSMENT**

The majority of the assessment is based on your creative work, including compositions for specified visiting musicians and projects where you decide what to write.

MA composers will typically offer a range of more varied work that is directed in part by the opportunities afforded by the course. MRes composers will typically offer a portfolio of work articulated as a single project that is supported by a clear research context.

**ENTRY REQUIREMENTS**

You are normally expected to have a strong first degree in a related subject. We value an enquiring approach to music, with an interest in developing your practice and exploring the many contexts in which it is situated.

**YOUR FUTURE CAREER**

You'll develop a broad range of intellectual, practical and transferable skills. We'll help you develop a portfolio career built around your creative practice, drawing in other related areas of work such as teaching; editing; performing; and work in other areas of the creative industries.



**STUDENT PROFILE**  
**ALEX MAH**  
**MRES COMPOSITION**

"I chose Bath Spa because I specifically wanted support in developing my practice of composing using verbal scores and an environment that would support a fairly self-directed study where disciplinary boundaries could be fluid.

The highlights of my time here were the Porthleven Prize – when I had a total of three weeks in residency in Cornwall, and the friends I met.

I think the best thing about the MRes Composition course was the freedom to be self-directed and how I was supported in this. I've also really appreciated having James Saunders as my tutor. He has been very helpful at every stage and we genuinely have a strong relationship of mutual respect and shared artistic interests."



# MA Music Performance

<b>AWARDS:</b> MA Music Performance Postgraduate Diploma (PG Dip) Music Performance  Postgraduate Certificate (PG Cert) Music Performance	<b>LENGTH:</b> Full-time: 1 year Part-time: 2 years  <b>KEY FEATURES:</b> One-to-one tuition with expert tutors together with weekly performance classes and workshops  A wide range of ensemble opportunities where you can work and perform with other students  Excellent facilities at Newton Park Campus – Michael Tippett Centre, library and IT resources	<b>APPLICATIONS:</b> An online application can be made using the 'Apply Now' button on the course's webpage. For any admissions enquiries please contact: T: +44 (0)1225 876180 E: admissions@bathspa.ac.uk www.bathspa.ac.uk/postgrad-apply	<b>ENQUIRIES:</b> For all enquiries please email postgraduate@bathspa.ac.uk Course Director: Tom Worley  <b>FIND OUT MORE:</b> www.bathspa.ac.uk/pg-music-performance
---	---	--	--



This course is for performers interested in live or recorded performance within classical or jazz styles. Throughout you'll receive one-to-one instrumental or vocal tuition from our team of experienced tutors as part of a series of performance modules. The course culminates with a final project, where you'll prepare a performance, normally a high-profile public recital. Alongside your solo work you'll develop your research, collaborative, ensemble and publicity skills.

This course gives you, as an instrumental/vocal performer, the skills and opportunities to develop your individual and ensemble skills to a high level. You'll undertake four modules over two trimesters and a double module in your third trimester.

**COURSE STRUCTURE AND CONTENT**  
In Performance 1, you'll develop your performance skills and technique, and extend your repertoire. Alongside this the Research Methodologies and Context module gives you a thorough grounding in research methodology. Your development as a performer is supported by regular one-to-one lessons with a specialist teacher.  
The Performance 2 module develops performance skills and repertoire while furthering your understanding of performance history and practice. You'll also explore strategies for marketing yourself, and have the opportunity to work with peers, and across subject boundaries.  
You'll have a choice of modules at this stage: Professional Collaboration, Intercultural Musicology and Opera Studies.  
The third trimester involves a Major Project for which you'll prepare a programme for a substantial public performance. The content and structure of this project is to be negotiated with course tutors.

**ASSESSMENT**  
You'll complete individual assignments for each module. Including recitals, a lecture recital and written submissions.

**ENTRY REQUIREMENTS**  
We offer places based on quality, commitment and ability to benefit from the course. Normally, but not invariably, you'll have a first degree. We invite individuals with a range of academic disciplines and from a variety of national backgrounds to apply.

**YOUR FUTURE CAREER**  
Previous graduate destinations include doctoral studies; freelance répétiteur and keyboard/continuo specialist; Choir Director and Piano/Vocal Tutor.  
Our graduates work in a wide range of areas such as orchestral performance; opera; conducting; choral direction; accompaniment; session work; music promotion; broadcast media; instrumental teaching; and community music projects.



# MA Sound Arts

**AWARDS:**

MA Sound Arts  
Postgraduate Diploma (PG Dip)  
Sound Arts  
Postgraduate Certificate (PG Cert)  
Sound Arts

**LOCATION:**

Newton Park campus

**FEES:**

UK/EU Full-time: £7,395  
International: £14,300

**LENGTH:**

Full-time: 1 year  
Part-time: 2 years

**KEY FEATURES:**

Offers broad coverage while facilitating individual specialism  
Covers music in any genre alongside other areas of creative practice in sound  
Runs alongside Sound Production and Sound Design MAs, with options across programmes

**APPLICATIONS:**

An online application can be made using the 'Apply Now' button on the course's webpage. For any admissions enquiries please contact:  
T: +44 (0)1225 876180  
E: admissions@bathspa.ac.uk  
www.bathspa.ac.uk/postgrad-apply

**ENQUIRIES:**

For all enquiries please email postgraduate@bathspa.ac.uk  
Course Director: Joseph Hyde

**FIND OUT MORE:**

www.bathspa.ac.uk/pg-sound-arts

Explore sound as a creative medium at an advanced level, and focus on the areas that interest you most. We'll help you develop the technical skills you need, but the course is about sound more than technology, and values lo-tech and no-tech as much as the latest technological developments.

You can work in any music genre, and/or cover areas such as soundscape recording and sound design, interactive audio (for applications such as live performance, gaming, VR, immersive environments and installations), spatial audio, hardware/software (instrument) design and interdisciplinary practice incorporating other media.

The course caters for those working in a wide variety of music genres, and at the same time also covers areas of practice such as soundscape recording and sound design, interactive audio, spatial audio, hardware/software design and interdisciplinary practice incorporating other media. Most students won't cover all of these areas, but will use the course to develop an individually-tailored portfolio of skills, experience and top-level work across them.

**COURSE STRUCTURE AND CONTENT**

In trimester one, you'll gain the skills you'll need to fulfil the rest of the course. The Sound Arts Skills module is built on the idea that you'll already have technical skills in this area. It therefore allows you to choose a handful of skills projects from a large number of options – these cover skills right across the Sound Arts, Sound Design and Sound Production pathways and include (optional) elements of multimedia.

The Research Methodology and Context module develops skills in postgraduate-level research and writing.



In trimester two, you'll study the Sonic Architecture module. This is intended as an expansion of traditional music composition teaching, where the aesthetic aspects of individual work will be examined and developed.

Alongside this core module, you'll be offered a wide range of options. The Visual Music module explores the idea that musical thinking can be extended to the visual. Intertextuality in Sound Production, from the Sound Production pathway, explores the overlap between Urban Music production. Post Production, from the Sound Design pathway, explores an industry-level workflow for Audio Post for picture.

In trimester three, you'll complete the course with an independent research project, comprising of a large-scale practical project. Allowing you to develop your own individual and original research area.

**ASSESSMENT**

You'll be assessed entirely on coursework. The majority of this will be practical and creative work, including the dissertation-equivalent Major Project.

**ENTRY REQUIREMENTS**

We're looking for individuals with a proven track record in creative sound/music practice. Generally we look for a first degree, 2:1 or higher. Often this will be in music or music technology. However, we accept applicants with other degrees where they can demonstrate relevant experience.

**YOUR FUTURE CAREER**

Our graduates have a range of successful careers in production, composition, music for film and TV, sound design for moving image and games, sound art, software development, engineering, further education, higher education and research.

**STUDENT PROFILE**

**ZSOFIA SZUCS**  
**MA SOUND ARTS**

"One of the key aspects that attracted me is that the course focuses on immersive environments, installations and spatial audio aspects, which is and was very relevant to some of my project ideas. Also the international reputation of the department attracts such a variety of students, that I believed studying at Bath Spa will be a stimulating studying environment for a Masters level course. And last but not least, there are so many inspirational experts leading and teaching within this department, who – I knew – I will gain professional advice and specific guidance from. Their works are specifically relevant to my needs as a developing artist, and they offer essential support towards building my professional career as a Sound Artist."

# MA Sound Design

**AWARDS:**

MA Sound Design  
Postgraduate Diploma (PG Dip)  
Sound Design  
Postgraduate Certificate (PG Cert)  
Sound Design

**LOCATION:**

Newton Park campus

**FEES:**

UK/EU Full-time: £7,395  
International: £14,300

**LENGTH:**

Full-time: 1 year  
Part-time: 2 years

**KEY FEATURES:**

Contemporary and innovative approaches to sound design and audio post production  
Covers a wide spectrum while accommodating individual interests and requirements  
Runs alongside Sound Production and Sound Arts MAs, with options across programmes

**APPLICATIONS:**

An online application can be made using the 'Apply Now' button on the course's webpage. For any admissions enquiries please contact:  
T: +44 (0)1225 876180  
E: admissions@bathspa.ac.uk  
www.bathspa.ac.uk/postgrad-apply

**ENQUIRIES:**

For all enquiries please email  
postgraduate@bathspa.ac.uk  
Course Director: Jan Meinema

**FIND OUT MORE:**

www.bathspa.ac.uk/pg-sound-design

This forward-thinking course invites you to explore the creative use of sound within film and other visual media at an advanced level. The course focuses on the more creative aspects of sound design and post-production while providing you with the necessary technical skills.

The course delivers a mixture of advanced technical skills related to sound design and audio post production for film and other visual media. It also provides creatively-oriented insights into contemporary sound design practice and encourages students to push the boundaries of the field.

MA Sound Design is part of a suite of postgraduate courses available across music and sound, operating alongside 'sister' pathways in Sound Production and Sound Arts.

**COURSE STRUCTURE AND CONTENT**

In trimester one, you'll gain the skills you'll need to fulfil the rest of the course. The Sound Design Skills module is built on the idea that you'll already have technical skills in this area. It therefore allows you to choose a handful of skills projects from a large number of options – these cover skills right across the Sound Arts, Sound Design and Sound Production pathways and include (optional) elements of multimedia.

The Research Methodology and Context module develops skills in postgraduate-level research and writing.

In trimester two you'll further your practice through the core module Sound Design Practice. This module explores the creative and practical application of Sound Design within a visual narrative and storytelling context. Alongside this core module, you'll be offered a wide range of options. The Post Production module explores an industry-level workflow for Audio Post within film and visual media and covers a wide range of associated skillsets. Intertextuality in

Sound Production, from the Sound Production pathway, explores the overlap between Urban Music production and what are considered more experimental genres. The Visual Music module, from the Sound Arts pathway, explores the idea that musical thinking can be extended to the visual, and encourages students to develop multimedia projects that explore this idea. There are also choices in Composition, Performance, Musicology and Professional Practice.  
In trimester three, you'll complete the course with an independent research project, comprising of a large-scale practical project, supported by a reflective account.

**ASSESSMENT**

The assessment is majorly based around practical coursework, with the aim to build an extensive portfolio of sound design and post production work. Practical coursework is typically supported by a written commentary or evaluation.

**ENTRY REQUIREMENTS**

We're looking for creative individuals that have proven experience in sound design, audio post production, or music production.  
Generally we look for a first degree, 2:1 or higher. Often this will be in audio post production, film, music, music technology or another closely related subject field. However, we accept applicants with other degrees where they can demonstrate relevant experience.

**YOUR FUTURE CAREER**

Our graduates have a range of successful careers in production, composition, music for film and TV, sound design for moving image and games, sound art, software development, engineering, further education, higher education and research.





# MA Sound Production

**AWARDS:**

MA Sound Production  
Postgraduate Diploma (PG Dip)  
Sound Production  
Postgraduate Certificate (PG Cert)  
Sound Production

**LOCATION:**

Newton Park campus

**FEES:**

UK/EU Full-time: £7,395  
International: £14,300

**LENGTH:**

Full-time: 1 year  
Part-time: 2 years

**KEY FEATURES:**

Cutting edge interdisciplinary approach to music composition and production  
Flexible and adaptable to individual interests  
Runs alongside Sound Arts and Sound Design MAs, with options across programmes

**APPLICATIONS:**

An online application can be made using the 'Apply Now' button on the course's webpage. For any admissions enquiries please contact:  
T: +44 (0)1225 876180  
E: [admissions@bathspa.ac.uk](mailto:admissions@bathspa.ac.uk)  
[www.bathspa.ac.uk/postgrad-apply](http://www.bathspa.ac.uk/postgrad-apply)

**ENQUIRIES:**

For all enquiries please email [postgraduate@bathspa.ac.uk](mailto:postgraduate@bathspa.ac.uk)  
Course Director: Ben Ramsay

**FIND OUT MORE:**

[www.bathspa.ac.uk/pg-sound-production](http://www.bathspa.ac.uk/pg-sound-production)



Develop your own signature sound and production style through this forward-thinking, cutting edge music composition and production course. The MA Sound Production programme is tailored towards individuals who are keen to hone their composition and production skills inside an intertextual and cross-disciplinary framework that pushes at the stylistic boundaries of genre. The content will cover aesthetic considerations as well as technology and techniques utilised in modern music making.

The course is part of a suite of courses available across music and sound, operating alongside 'sister' pathways in Sound Design and Sound Arts, which allow further specialism in these areas.

**COURSE STRUCTURE AND CONTENT**

In trimester one, you'll gain the skills you'll need to fulfil the rest of the course. The Sound Production Skills module is built on the idea that you'll already have technical skills in this area. It therefore allows you to choose a handful of skills projects from a range of options – these cover skills right across the Sound Arts, Sound Design and Sound Production pathways and include (optional) elements of multimedia.

The Research Methodology and Context module develops skills in postgraduate-level research, writing, creativity and critical thinking.

In trimester two, you'll advance the knowledge gained in the the first trimester and begin exploring the intertextual possibilities of music composition. In addition, you'll develop a creative project that will further extend the work undertaken on the trimester 1 Sound Production Skills module.

The module Intertextuality in Sound Production aims to capture and contextualise emerging trends and innovation at the forefront of sound production and composition, and develop composition skills that extend beyond the limits of genre.

In trimester three, you'll complete the course with an independent research project, comprising of a large-scale practical project. The project will fulfil the same function as the traditional dissertation; you'll develop individual and original research, but through the creation of a portfolio of works, rather than a heavy written element alone.

**ASSESSMENT**

You'll be assessed entirely on coursework. The majority of this will be practical and creative work, including the dissertation-equivalent Major Project.

**ENTRY REQUIREMENTS**

We're looking for creative thinkers from a wide variety of backgrounds who have a passion for working with sound and music. You'll need to be keen to explore music making at the edge of contemporary stylistic tendencies.

Generally we look for a good first degree, 2:1 or higher. Often this will be in music or music technology. However, we accept applicants with other degrees where they can demonstrate relevant experience.

**YOUR FUTURE CAREER**

You can use the course to develop an individually-tailored portfolio of skills. This will equip you for the current employment landscape, where a combination of traditional music roles are required alongside broader practice in sound and other media.

The course also provides the breadth necessary for FE and HE teaching in the field, and provides the basis required for PhD research and beyond.

# MA Songwriting

<b>AWARDS:</b> MA Songwriting (campus based) MA Songwriting (distance learning)
<b>LOCATION:</b> Newton Park and Corsham Court campuses, and via distance learning.
<b>FEES:</b> UK/EU Full-time: £7,395 International: £14,300

<b>LENGTH:</b> Full-time: 1 year Part-time: 2 years
MA Songwriting (distance learning) is available as full-time or part-time.
<b>KEY FEATURES:</b> A pioneering curriculum – the world’s first Songwriting Master’s  Prepares you for a range of internationalised, professional futures in music and its wider industries  Taught by professional, published songwriters and performers

<b>APPLICATIONS:</b> An online application can be made using the ‘Apply Now’ button on the course’s webpage. For any admissions enquiries please contact:  T: +44 (0)1225 876180 E: admissions@bathspa.ac.uk www.bathspa.ac.uk/postgrad-apply
---

<b>ENQUIRIES:</b> For all enquiries please email postgraduate@bathspa.ac.uk  Course Director: Pete Bernard (campus based) Davey Ray Moor (distance learning)
<b>FIND OUT MORE:</b> www.bathspa.ac.uk/pg-songwriting



Songwriting remains one of the UK’s biggest exports, with UK music stronger than ever. On MA Songwriting you’ll nurture your musical creativity, focus and develop your professional portfolio, forge new collaborative networks, and engage in research designed to support your career as a songwriter.

From day one, you’ll write songs using alternative strategies designed to work alongside your current creative approaches. Lyric-writing and a fluent command of imagery, metaphor and narrative is nurtured, as chords and melody take shape around language’s meaning, and vice versa. You’ll investigate the power and potential of song forms, modes of address, lyric subjects, harmonic structures, melodic choices and arrangements to inflect meaning and identity in your songs.

Having stretched the range of creative options available to you within your own artistic palette, you’ll turn your hand to research; this is your entry to the postgraduate world. Then, collaborating with songwriters and practitioners from related disciplines

will increase your creative and networking range. Ahead of your Major Project, contextual research performs the vital tasks of shaping your showcase song outputs.

**COURSE STRUCTURE AND CONTENT**

You’ll study a range of modules, which include:

Songwriting Skills: this is a creative primer, during which you’ll develop a feel for sensory imagery, metaphor and a facility for narrative tension. Meanwhile you apply various creative approaches to harmonic constructions and melodic devices. Of the songs generated here, some may go on to become part of your final Major Project showcase. The aim is to allow songs and writing within all genres to flourish.

Research Methodologies and Context: here we engage with a ‘pathfinder’ contextual study into an economic/cultural context for your future song outputs. From folk to hip-hop, indie, chart pop, R&B and other genres, each as an industrial context possesses a uniquely different set of song expectations, venues,

publishers, labels, agents, producers and performers. On this module you research potential career destinations relevant to you and your songwriting.

Song Identity and Culture: here you investigate and unravel your personal songwriting ‘DNA’. This is a research process that explores songs significant to your own writing, and investigates them in relation to contexts of performer identity, genres, movements and broader culture. You will also chose one of the following modules:

–Professional Collaboration : you’ll negotiate collaboration with other practitioners within a professional context. For example, songwriters might collaborate in the traditional manner of successful and acclaimed songwriting teams, or may work with choreographers, filmmakers, poets, composers, arrangers or remixers.

–Workstation Song Production: this module investigates the contemporary songwriter’s personal studio for its power to create both impressive song demonstrations and finished production masters. Increasingly,

original artists are mobile and adaptive; plugging their laptop systems into bigger studio systems, or completing masters in their bedrooms. Here we explore the technical abilities that empower the contemporary autonomous songwriter to realise their vision.

Major Project: This is where you bring all your research and preparation into focus. You are asked to present a showcase artefact representing the songs developed during your time on the course. Usually this is an album. For some it will be several projects for differing contexts, a common practice for the working songwriter.

**ASSESSMENT**

Assessments range from simple audio sketches in the early stages, to full album productions in Major Project; each is assessed for quality and market focus. On the research modules, formal, researched and referenced papers express your intellectual and analytical development, and presentation skills bring your work to life.

**ENTRY REQUIREMENTS**

You are normally expected to have a strong first degree in a related subject, although this is flexible. You’ll already be very much engaged in songwriting, with a thorough grounding in your own specialism – this course is not suitable for beginners. However, lack of music theory isn’t a hindrance. You’ll possess flair for writing and/or performing, as well as a good undergraduate degree.

**YOUR FUTURE CAREER**

There is a broad range of professional outcomes from this course and our graduates now work as performers, lecturers, researchers, agents, signed artists, signed writers, teachers, therapists and publishers.

This course is also an excellent grounding if you’re interested in going on to PhD study.





# MA Songwriting (distance learning)

Our distance learning Songwriting Master's Degree is a world leader in the innovation of teaching and learning songwriting online. The course brings together songwriters from all over the world who wish to study from their home situation and students have attended the course from Australia, China, Germany, Greece, Ireland, Italy, Puerto Rico, Singapore, Turkey, the USA and the UK.

The distance learning option is a blended learning design which combines formal online lectures and instructional videos with regular personal tutorials. Week to week you study a workbook of specific tasks which are reviewed and discussed with your tutor. Peer-based teaching and learning occurs in our regular Songwriter's Circle webinars in which students from all over the world meet to share and critique their work.

## STUDENT PROFILE PAULA SMAGON MA SONGWRITING

*"Bath Spa is a creative space and you feel it from the moment you pass through the entrance. There is a very special 'vibe' around the place, and I will be heartbroken to not be a student here anymore!*  
*Songwriting has given me a focus for the years to come and I have learnt many things including my own self-development, as I now understand exactly what I need to do. The objective of the Songwriting course is to leave with a written and recorded album, which is not only a form of dissertation but also a career portfolio. Bath Spa has enabled me to use my creativity to maximum effect. I have also discovered other parts in music that have allowed me to access further possibilities in the future."*

## STUDENT PROFILE DANIEL M. P. SHAW MA SONGWRITING (DISTANCE LEARNING)

*"The distance learning experience of my Songwriting course at Bath Spa was perfect for me. Its flexible nature allowed me to tailor-make my learning to my own needs and personal situation. I was able to consolidate my existing songwriting skills and experience while learning from top industry professionals, academics and a pool of talented peers. At the same time I could continue working, writing and performing as a musician, despite living in France – a different country to everyone else involved in the course! The distance learning materials and regular face-to-face individual and group tutorials meant that I felt very close to the learning hub and action at Bath Spa. I would recommend this course to anyone who is serious about their songwriting, whatever their genre of focus, and whether they have just recently started or have been already been doing it for many years!"*





# MA Feature Filmmaking

**AWARDS:**  
MA Feature Filmmaking  
Postgraduate Diploma (PG Dip)  
Feature Filmmaking  
Postgraduate Certificate (PG Cert)  
Feature Filmmaking

**LOCATION:** Newton Park and  
Corsham Court campuses, Paintworks  
Production Office

**FEES:** UK/EU Full-time: £9,500  
International: £14,500

**LENGTH:**  
Full-time: 1 year  
Part-time: 2 years

**KEY FEATURES:**  
A unique chance to make a feature film  
as part of a Master's degree

Taught by active industry professionals  
with feature film experience

Learn about traditional and emerging  
routes to distributing your film

**APPLICATIONS:**  
Application forms are available on the  
website and for any admissions enquiries  
please contact:  
T: +44 (0)1225 876180  
E: admissions@bathspa.ac.uk  
www.bathspa.ac.uk/postgrad-apply

**ENQUIRIES:**  
For all enquiries please email  
postgraduate@bathspa.ac.uk  
Course Director: Rob Brown

**FIND OUT MORE:**  
www.bathspa.ac.uk/  
pg-feature-filmmaking



This Feature Filmmaking course will give you an industry-focused education in the business and practice of modern, low budget feature film production.

Modern filmmaking is collaborative and we've tailored the course for aspiring writers, directors and producers. Throughout the process we'll help you to develop your skills for a career working on feature length documentaries or fiction. We teach you how modern filmmakers make feature length projects, while offering you practical experience of trying to make them yourself.

This is an industry facing course; you'll build and develop your creative and associated business skills. We believe filmmakers need a clear understanding of business and financial issues to achieve their full creative potential.

**COURSE STRUCTURE AND CONTENT**  
This course consists of five modules:

- Development introduces and explores practical and creative approaches to low budget feature production.
- The Finance module focuses on the historical development of business systems, procedures and models that influence the contemporary global film business.
- In Pre-Production, students have the ability to further develop their main project in the light of the insights learnt in the course so far.
- Audience will give students thorough grounding in the theory and practice of contemporary marketing as applied to film.
- In Production, students will turn greenlit projects into a feature length production.



**ASSESSMENT**  
You'll be assessed in a variety of ways, including scriptwriting, production folders, audience building strategies and a feature film project.

**ENTRY REQUIREMENTS**  
You must have a script or treatment which is ready to enter pre-production. We will also consider a film related undergraduate degree and/or relevant experience.

**YOUR FUTURE CAREER**  
This experience may lead some producers and directors into work on other feature films, TV drama or drama documentaries. Other students may wish to pursue academic work as lecturers or practitioners.  
Another potential career route open to graduates will be to use their subsequent project as part of a PhD. Other careers can involve working with arts organisations.

All images from award-winning film  
Sixteen (2013)  
01 Roger Jean Nsengiyumva as Jumah  
02 Award-winning director Rob Brown on set

# MA Classical Acting

<b>AWARDS:</b> MA Classical Acting	<b>LENGTH:</b> Full-time: 1 year Part-time: 2 years	<b>APPLICATIONS:</b> An online application can be made using the 'Apply Now' button on the course's webpage. For any admissions enquiries please contact:  T: +44 (0)1225 876180 E: admissions@bathspa.ac.uk www.bathspa.ac.uk/postgrad-apply	<b>ENQUIRIES:</b> For all enquiries please email postgraduate@bathspa.ac.uk  Course Director: Dr Roger Apfelbaum
<b>LOCATION:</b> Newton Park campus	<b>KEY FEATURES:</b> Taught by highly regarded specialists in acting and directing  Flexible delivery – study full-time, part-time  Excellent industry links in Bath, the UK and internationally		<b>FIND OUT MORE:</b> www.bathspa.ac.uk/pg-classical-acting
<b>FEES:</b> UK/EU Full-time: £7,395 International: £14,300			

01



The MA in Classical Acting is a postgraduate acting course for live-performance actors at all stages of their career and is taught by highly regarded specialists in acting and directing.

You'll gain insight into the classical drama canon (from Ancient Greece to the mid-20th century) and enhance your understanding, creativity and delivery of classical texts. Your skills will be developed through evaluation and reflection on your own practice; expanding your artistic and market awareness; and gaining insights into innovative artistic practices.

You might explore areas such as: Greek Comedies and Tragedies; English Renaissance Plays; Naturalistic Plays from Germany, Norway, Russia, America and Britain.

**COURSE STRUCTURE AND CONTENT**

In trimester one, you'll be immersed in practical training, leading to performances of monologues, duologues, and scenes. You'll also get a grounding in current research methods, completing practical or scholarly research. This leads to a presentation and an essay.

In trimester two, we'll give you the opportunity to train at Shakespeare's Globe in London. You'll develop your training into a professional portfolio. Alongside this you'll develop a theatre company with fellow students for public performances of classical plays of your choice.

In trimester three, you can choose to undertake a more traditional written dissertation, a performance based dissertation or a mixture of the two. You might direct a production, lead workshops, or research into areas relating to directing as part of your dissertation.

**ASSESSMENT**

Assessments could include performances, essays, literature reviews, written documentation of work, presentations, portfolios, leading workshops, written evaluations, rehearsal and practice blogs, written dissertations, practical dissertation projects, and critical play reviews.

**ENTRY REQUIREMENTS**

You are normally expected to have a strong first degree in a related subject. We're looking for individuals with a flair for performance and a clear passion for classical acting. Training is hands-on, so you'll need energy, drive and the motivation to transform your ideas into productions.



# MA Creative Producing

**AWARDS:**

MA Creative Producing

**LOCATION:**

Newton Park campus

**FEES:**

UK/EU Full-time: £7,395  
International: £14,300

**LENGTH:**

Full-time: 1 year  
Part-time: 2 years

**KEY FEATURES:**

Led by the University's Creative Producer, you'll work on real-time projects with our in-house production company

Extend your artistic community by working in a unique collaborative model

Enhance your professional skills and networks through the University's industry partners, collaborators and guest speakers

**APPLICATIONS:**

An online application can be made using the 'Apply Now' button on the course's webpage. For any admissions enquiries please contact:

T: +44 (0)1225 876180  
E: [admissions@bathspa.ac.uk](mailto:admissions@bathspa.ac.uk)  
[www.bathspa.ac.uk/postgrad-apply](http://www.bathspa.ac.uk/postgrad-apply)

**ENQUIRIES:**

For all enquiries please email [postgraduate@bathspa.ac.uk](mailto:postgraduate@bathspa.ac.uk)

Course Director: Kerry Irvine

**FIND OUT MORE:**

[www.bathspa.ac.uk/pg-creative-producing](http://www.bathspa.ac.uk/pg-creative-producing)

**Creative Producers are in demand more than ever, as they are vital to the innovation and sustainability of the cultural industries. This MA Creative Producing programme is for producers at all stages of their career.**

Through this postgraduate course in Creative Producing, we'll teach you the core skills you need to get your work to market, as well as helping you develop industry contacts. You'll build on your current experience and artistic vision; exploring your creative ideas and judgement, alongside developing your entrepreneurial thinking.

If you're a new or early career producer, you'll learn and develop skills to enhance your creative vision, artistic judgement, business skills and acumen. If you're an established producer, you'll be able to develop, evaluate and reflect on your own practice. In addition, you'll expand your artistic and markets awareness by gaining insights into innovative artistic practices.

**COURSE STRUCTURE AND CONTENT**

In the first trimester, we'll begin by giving you a context of the cultural industry you'll be preparing to enter, along with insights into its theoretical and practical landscape. You'll gain core skills to enhance your academic practice, whilst examining how the producer fits into a collaborative team allowing you to reflect and explore your own professional identity and knowledge as a producer.

In the second trimester, you'll begin the collaborative model where you'll explore your artistic ideas and begin planning for your own project or production.

The final trimester offers the framework for your independent work as a producer to be fully realised, you'll embark on a major project of your choice to the completion of your MA.

**ASSESSMENT**

You'll be assessed by a range of methods that include performance project; proposal documents for funding, business plans, strategy or artistic ideas; research projects; presentations; viva voce; reflective learning and work-based reports or journals; and project evaluations.

**ENTRY REQUIREMENTS**

You are normally expected to have a strong first degree in a related subject. This MA Creative Producing programme is for producers at all stages of their career; from those with a desire to work in live performance, to those with existing producing experience.

**YOUR FUTURE CAREER**

The course is geared towards giving you the skills you need to develop a freelance career as a Creative Producer.

You'll also be able to diversify your work, by developing skills in other areas. Through the course, you'll gain transferable skills that will equip you to work in a range of areas including event and cultural management; cultural leading and strategy; artistic direction or management; leisure and tourism industry; fundraising; audience development; and marketing.



# MA Dance

<b>AWARDS:</b> MA Dance Postgraduate Diploma (PG Dip) Dance
<b>LOCATION:</b> Newton Park campus
<b>FEES:</b> UK/EU Full-time: £7,395 International: £14,300

<b>LENGTH:</b> Full-time: 1 year Part-time: 2 years
<b>KEY FEATURES:</b> Explore and create choreography for live performance and film  Develop skills as a dance maker with other students from around the world  Collaborate with other artists, and learn skills needed to succeed as a professional

<b>APPLICATIONS:</b> An online application can be made using the 'Apply Now' button on the course's webpage. For any admissions enquiries please contact:  T: +44 (0)1225 876180 E: admissions@bathspa.ac.uk www.bathspa.ac.uk/postgrad-apply
--

<b>ENQUIRIES:</b> For all enquiries please email postgraduate@bathspa.ac.uk  Course Director: Dr Christopher Lewis-Smith
<b>FIND OUT MORE:</b> www.bathspa.ac.uk/pg-dance

This MA programme focuses on you as both artist and entrepreneur, with a specialist emphasis on site, collaboration, and screen-based practice. You'll develop as a "maker of work" while gaining an understanding of, and an ability to respond to, trends and opportunities in the workplace.

We offer a range of creative opportunities to enhance your dance studies. Our tutors are practicing performers, choreographers, screendance makers and academics with track records of publications and award winning creative work.

### COURSE STRUCTURE AND CONTENT

The Research Methodologies and Context module gives you the opportunity to develop an understanding of, and ability to, research at a sophisticated and professionally applicable level. Study in this module may feed into all other modules on the program.

Creative Practice 1 explores interdisciplinary performance with a specific focus on screen-based practice. 'Screendance', in the context of this module, concerns the creative interface between the body and digital technology to design and produce work for the single screen.

Alongside this you'll be able to choose from two optional modules. Professional Collaboration supports you to collaborate with other practitioners, either fellow students, professional practitioners or organisations. The Roles of the Producer identifies and explores the range of artistic, legal, management, financial and operational elements involved in the work of a producer. Together these elements provide you with a 'tool kit' of core skills that enable the creation, development, delivery and strategic planning of a creative product.

Creative Practice 2 responds to the potential offered by non-theatre performance locations, and further encourages collaboration with students studying other subjects. The module guides you to construct work that responds to a 'site' of your own choosing. Work may involve the forms of 'live' performance, film, or installation.

Finally the Major Project is the culmination of the programme. You negotiate the form of the major project, in which you deploy the skills and understanding you have acquired in the previous trimesters.

### ASSESSMENT

Work is assessed through a range of methods including: performances/ screenings; presentations; written work and journals. Practical project assessment may focus on your creative process as well as the final product. All work is assessed against generic criteria so you can compare your achievements against your previous work.

### ENTRY REQUIREMENTS

We are looking for dancers with a willingness to explore and a passion for creating new work. You'll need a dance-based first degree (2:2 or above) or a relevant professional qualification/experience equivalent.

### YOUR FUTURE CAREER

Having a postgraduate qualification opens up a range of options in the world of dance related work. You'll be positioned to become a choreographer, performer, teacher, screendance maker, PhD researcher, or a combination of these things. We'll encourage you to be experimental, support you to develop versatility and how to market and present your work in a professional manner to help you graduate with the skills needed to succeed in a challenging but inspirational workplace.





# MA Directing

**AWARDS:**

MA Directing

**LOCATION:**

Newton Park and Corsham Court campuses

**FEES:**

UK/EU Full-time: £7,395  
International: £14,300

**LENGTH:**

Full-time: 1 year  
Part-time: 2 years

**KEY FEATURES:**

Direct productions in our theatres on campus and in Bath

Practical classes, seminars, and assistant directing with experienced practitioners and researchers

Work with and direct a range of MA and BA Acting and Drama students

**APPLICATIONS:**

An online application can be made using the 'Apply Now' button on the course's webpage. For any admissions enquiries please contact:

T: +44 (0)1225 876180  
E: [admissions@bathspa.ac.uk](mailto:admissions@bathspa.ac.uk)  
[www.bathspa.ac.uk/postgrad-apply](http://www.bathspa.ac.uk/postgrad-apply)

**ENQUIRIES:**

For all enquiries please email [postgraduate@bathspa.ac.uk](mailto:postgraduate@bathspa.ac.uk)

Course Director: Dr Roger Apfelbaum

**FIND OUT MORE:**

[www.bathspa.ac.uk/pg-directing](http://www.bathspa.ac.uk/pg-directing)

This postgraduate directing course is for directors of theatre and live performance. You will be given the opportunity to direct productions in our theatres on campus and in Bath, whilst also working with a range of the MA and BA Acting and Drama students.

Our MA Directing programme helps you build a portfolio of performance experiences as part of Bath Spa University's diverse theatre productions. From developing small companies, to managing large scale productions, and from classical to contemporary theatre, you'll get a broad and advanced understanding of working in theatre today.

You'll explore approaches to directing both through seminars and practical work. Alongside this you'll develop an advanced understanding of actor training. We'll be dedicated to your individual development. You'll receive support through tutorials and will embark on your own production work.

**COURSE STRUCTURE AND CONTENT**

In the first trimester, the production module will support you as both director and actor as you work on selected speeches and scenes while also collaborating on larger productions. You will also conduct a small research project and learn about MA level research methods.

In the second trimester, the second production modules gives you the opportunity to create original work, working either with your own chosen cast or with a university or professional production. You will also undertake projects in professional engagement, with opportunities to work with professional actors and directors.

In the third trimester, you can choose to undertake a more traditional written dissertation, a performance based dissertation or a mixture of the two. You might direct a production, lead workshops, or research into areas relating to directing as part of your dissertation.

**ASSESSMENT**

Assessments could include performances, essays, literature reviews, written documentation of work, presentations, portfolios, leading workshops, written evaluations, rehearsal and practice blogs, written dissertations, practical dissertation projects, and critical play reviews.

**ENTRY REQUIREMENTS**

You are normally expected to have a strong first degree in a related subject. MA Directing is for theatre and live performance directors at all stages of their career, with a desire to work in or currently working in live performance. New and early career directors learn and develop skills to enhance their creative vision, artistic judgement, and leadership.



# MA Directing Circus (Circomedia)

## AWARDS:

MA Directing Circus

## LOCATION:

Circomedia, Bristol

## FEES:

UK/EU Full-time: £7,600

International: £14,300

## LENGTH:

Full-time: 1 year

Part-time: 2 years

## KEY FEATURES:

Work with professionals and stay up-to-date with the most recent developments within the industry

Foster creative practices for directing circus-based performance work

Explore circus direction through a variety of research methods

## APPLICATIONS:

An online application can be made using the 'Apply Now' button on the course's webpage. For any admissions enquiries please contact:

T: +44 (0)17 947 728

E: [admissions@circomedia.com](mailto:admissions@circomedia.com)

[www.bathspa.ac.uk/postgrad-apply](http://www.bathspa.ac.uk/postgrad-apply)

## ENQUIRIES:

For all enquiries please email [admissions@circomedia.com](mailto:admissions@circomedia.com)

Course Director: Dr Bim Mason

## FIND OUT MORE:

[www.bathspa.ac.uk/pg-directing-circus](http://www.bathspa.ac.uk/pg-directing-circus)

You'll study the roles, strategies and practical skills of circus directing, alongside a range of research methodologies. The course covers two areas – the director as author and the director as facilitator. During the course you might: share your work with specialist skills tutors and student peers; study other subject areas; work with youth circus groups; engage in practical projects with undergraduates or ex-Circomedia students; engage in a placement with a company of your choice.

You'll use a variety of research methods and promote autonomous and collaborative learning to explore circus direction. You'll engage with industry professionals on current debates and discourses of the discipline.

## COURSE STRUCTURE AND CONTENT

Research Methodologies and Context gives you an opportunity to work alongside students from other MA Performing Arts disciplines. It develops a sophisticated understanding of, and ability to, engage in practical research at a postgraduate level.

Circus Directing 1: Performer as Source is a practical module which explores a range of roles, responsibilities and skills necessary for directing circus-based performance. You study different types of circus performance creation and demonstrate skills through practice and knowledge sharing.

Circus Directing 2: Director as Author develops your directing skills with a longer, more in-depth project, with more emphasis on director-as-author, shifting the emphasis from taught learning to more independent learning. The Professional Engagement Collaboration module gives you the

opportunity to explore your subject specialism within a contemporary professional context to promote entrepreneurialism and/or professional practice.

The Final Thesis Project will draw on the skills and knowledge you have acquired from the earlier modules. Focusing on an area of practice that is central to your interests and aspirations, your thesis content is decided in negotiation with your course tutors. It may take the form of a written submission or practical work or a combination of both.

## ASSESSMENT

You'll be assessed through the practical outcome of your projects and the written content of your blog. Formative assessment is through tutor feedback on your rehearsal processes and on the draft essay. Summative assessment is through the practical outcome of your project, your written reflection of the project, and your essay.

## ENTRY REQUIREMENTS

You are normally expected to have a first degree in a related subject. This course suits individuals who have professional or semi-professional experience, either as a circus-artist performer who is interested in moving into directing, or as a theatre-based circus-theatre director who has some experience and is interested in moving into circus-based work. You'll ideally have a background in circus, physical theatre or directing, or a related subject area.



## STUDENT PROFILE

### ROBYN HAMBROOK MA DIRECTING CIRCUS

*"I am a New Zealand performance artist, director, teacher and producer based in the UK. With over fifteen years' experience, my passion lies in physical theatre, circus and street arts."*

*I chose to study at Bath Spa University because it was the only Master's course that combined directing and circus – two of my interests. The highlights of the course were the practical sessions with professional practitioners. The course also allowed me to network and collaborate with leading UK circus companies and peers in the industry."*



# MA Performing Shakespeare

**AWARDS:**  
MA Performing Shakespeare

**LOCATION:**  
Newton Park and Corsham Court campuses

**FEES:**  
UK/EU Full-time: £7,395  
International: £14,300

**LENGTH:**  
Full-time: 1 year  
Part-time: 2 years

**KEY FEATURES:**  
Unique flexible delivery – study full-time, part-time  
Taught by highly regarded specialists  
Excellent industry links

**APPLICATIONS:**  
An online application can be made using the 'Apply Now' button on the course's webpage. For any admissions enquiries please contact:  
T: +44 (0)1225 876180  
E: admissions@bathspa.ac.uk  
www.bathspa.ac.uk/postgrad-apply

**ENQUIRIES:**  
For all enquiries please email postgraduate@bathspa.ac.uk  
Course Director: Dr Roger Apfelbaum

**FIND OUT MORE:**  
www.bathspa.ac.uk/pg-performing-shakespeare

If you're interested in the performance of Shakespeare and want to study the original and contemporary practices, then this MA is for you. You'll take part in actor training and research seminars, leading to presentations and performances using our indoor and outdoor theatres on campus and in Bath city centre.

You'll develop production and networking skills, building a theatre company and a professional profile. We'll give you opportunities to take your work to external venues as part of your studies. With opportunities to work with BA Acting and Drama students, you'll get the experience as an actor to lead workshops and as a researcher who can work in productions.

We place emphasis on practice-based work. You'll take part in workshops on voice, text, movement and directing in our state-of-the-art studios.

**COURSE STRUCTURE AND CONTENT**  
From the start of the course you'll be immersed in a practical training, leading to performances of monologues, duologues, and scenes. You'll also get a grounding in current research methods, completing practical or scholarly research.

In the second trimester, we'll give you the opportunity to train at Shakespeare's Globe in London. You'll develop your training into a professional portfolio. Alongside this you'll develop a theatre company with fellow students for public performances.

In the third trimester, you can choose to undertake a more traditional written dissertation, a performance based dissertation or a mixture of the two.

**ASSESSMENT**  
Assessments could include performances, essays, literature reviews, written documentation of work, presentations, portfolios, leading workshops, written evaluations, reviews, rehearsal and practice blogs, written dissertations, practical dissertation projects, and critical play reviews.

**ENTRY REQUIREMENTS**  
You'll need a good first degree (2:1 or above) in an area relating to performance. We also accept individuals with relevant professional experience.

**YOUR FUTURE CAREER**  
Our graduates have become producers; actors; teachers; and PhD students. Other students have set up their own theatre companies.



01 Taming of the Shrew at The Scoop at More London  
02 Performance of The Tempest at the Newton Park Amphitheatre





# MSc Creative Computing

<b>AWARDS:</b> MSc Creative Computing	<b>LENGTH:</b> Full-time: 1 year Part-time: 2 years	<b>APPLICATIONS:</b> An online application can be made using the 'Apply Now' button on the course's webpage. For any admissions enquiries please contact: T: +44 (0)1225 876180 E: admissions@bathspa.ac.uk www.bathspa.ac.uk/postgrad-apply	<b>ENQUIRIES:</b> For all enquiries please email postgraduate@bathspa.ac.uk Course Director: Lee Scott
<b>LOCATION:</b> Newton Park campus	<b>KEY FEATURES:</b> Leverage creative technology to design interactive experiences that inspire curiosity.  Develop skills in digital storytelling, creative research and project leadership.  Refine your co-working skills via interdisciplinary creativity and industry insight.		<b>FIND OUT MORE:</b> www.bathspa.ac.uk/pg-creative-computing

Creative Computing is everywhere. The collision of good ideas and technological innovation continues to enhance how we communicate, learn, play, work and live. Our growing reliance on computing tools and experiences nevertheless demands a new form of talent – people who are technical yet creative, analytical yet playful, and experimental yet business-minded.

Our MSc in Creative Computing has been designed to respond to this growing need within the creative industries. You'll undertake modules designed to enhance your understanding and application of technology in a creative context, while gaining essential skills in creative research, interdisciplinary collaboration and enterprise.

## COURSE STRUCTURE AND CONTENT

You'll be taught the key skills needed to conduct creative research, shape a product to 'market ready' stage, and collaborate productively with practitioners within unfamiliar fields.

This is a flexible course that responds to your practice – whether you are a game designer, software developer, animator, web technologist or more besides. You'll undertake modules designed to enhance your understanding of the creative industries and digital creativity more widely, yet on your own terms, with an emphasis on deploying your own creative and technological skills in new, rewarding contexts.

### Modules in Creative Computing: Research Methods

Gain essential knowledge of project scoping, objective setting, data collection and documentation.

### Emerging Technologies

A forum for experimentation with new-to-market consumer technologies.



### Story Lab

A co-creation lab that interrogates the intersection of storytelling and digital creativity.

### Creative Incubator

Learn how to lead teams to shape original social enterprise or commercial ideas for the marketplace.

### Individual Enquiry

A practice-led and self-devised research investigation in the field of Creative Computing.

### ASSESSMENT

MSc Creative Computing is entirely coursework assessed. You'll deliver a varied and balanced collection of computing artefacts, tech experiments, and interactive experiences. Project work is supported by contextual essays, research reports, reflective commentaries, sketchbooks, development documents and presentations.

### ENTRY REQUIREMENTS

We typically require an honours degree of 2:2 or above. You should have a drive to pursue big ideas and a clear willingness to try out new things. Successful applicants will be imaginative, organised and have a keen eye for detail.

We encourage applications from individuals entering with industry experience, or from undergraduate study in fields such as computer science, creative computing, digital media, games development, digital art and creative technologies. We however value interdisciplinary working, and would welcome conversations with people who have not graduated from a technical subject but have some experience in colliding computing with other disciplines.

### YOUR FUTURE CAREER

Careers for graduates of MSc Creative Computing are wide-ranging. Options include Creative Technologist (various roles); Roles with digital marketing; Web and mobile app development; Producer roles within digital agencies; Computer graphics designer; Interface and interaction designer; PhD study.

# MA Heritage Management

**AWARDS:**

MA Heritage Management  
Postgraduate Diploma (PG Dip)  
Heritage Management  
Postgraduate Certificate (PG Cert)  
Heritage Management

**LOCATION:**

Corsham Court campus

**FEES:**

UK/EU Full-time: £7,395  
International: £14,300

**LENGTH:**

Full-time: 1 year  
Part-time: 2 years

**KEY FEATURES:**

Developed and taught by leading heritage practitioners  
A chance to build expertise in areas that most interest you  
Opportunities to work in partnership with major heritage organisations, specialists and researchers

**APPLICATIONS:**

An online application can be made using the 'Apply Now' button on the course's webpage. For any admissions enquiries please contact:  
T: +44 (0)1225 876180  
E: admissions@bathspa.ac.uk  
www.bathspa.ac.uk/postgrad-apply

**ENQUIRIES:**

For all enquiries please email postgraduate@bathspa.ac.uk  
Course Director: Dr Alison Hems

**FIND OUT MORE:**

www.bathspa.ac.uk/  
pg-heritage-management



The physical remains of our past – buildings, landscapes, city streets, archives, artefacts and archaeological sites – along with the intangible associations of tradition, language and memory continue to shape our lives. But the ways we understand and manage 'heritage' are changing rapidly.

We'll challenge you to think about what this means, help you to set heritage management in its social, political and economic context, and offer you the chance to apply your growing understanding through a range of research and practice-based projects with our regional and national partners.

You'll explore how museums, collections and heritage sites are managed, presented and explained, and consider their value beyond something to see or a place to visit. The course combines a strong conceptual basis for the study of heritage with the opportunity to develop hands-on skills and professional insight, working with a wide range of different organisations.

**COURSE STRUCTURE AND CONTENT**

In trimester one, we'll explore the changing and contested ideas about the nature of heritage, examine the social, political, and economic context in which heritage is defined and managed, and analyse current professional practice.

In trimester two, you will plan and undertake an independent research project, which allows you to ask key questions about a defined aspect of contemporary practice – one that fascinates you. In parallel with this, you'll complete a 25 day placement with one of our many partners in the sector.

In trimester three, you'll complete an extended piece of research through a dissertation or to design and deliver a heritage project – you might plan, design and put together an exhibition, develop materials to support volunteer recruitment and training, or run a fundraising campaign.

A slightly different structure applies for part-time students, which allows the flexibility to combine study with other commitments. Please contact us if you would like more information about how this works.

**ASSESSMENT**

You will be assessed through a mix of project work, formal essays, reports, portfolios and reflective commentary. Your final project might include producing a film, developing a website, or preparing learning materials for a range of different audiences. Alternatively, a more traditional Dissertation might lead you to further research and a PhD.

**ENTRY REQUIREMENTS**

You are normally expected to have a good first degree (2:1 or above) in any academic subject. You may be considered without a first degree, if you can demonstrate considerable relevant experience; you may be asked to attend an interview.

**YOUR FUTURE CAREER**

Careers in the heritage sector include collections management; education and learning; exhibition planning and implementation; community engagement and outreach; and marketing and fundraising. Outside heritage, the course supports work in the voluntary sector, social enterprise, fundraising, and a wide range of administrative and management roles.

Graduates of the course have gone on to work for a wide range of organisations, including English Heritage, the National Trust, Bristol Old Vic, and museum and heritage services across the region.

**STUDENT PROFILE**  
**CLARA BREITENMOSER**  
**MA HERITAGE MANAGEMENT**

"I chose to study the MA Heritage Management course at Bath Spa as I was drawn to the three part structure of the course. Coming with no background in the subject, spending the initial semester exploring the theory and writing academic work helped shape my understanding of the sector and all it entails. The opportunity to complete a placement and research project in the second semester were vital in gaining experience and seeing the sector in practice was very interesting. Finally the option to end the course with an extended project gave me the confidence to work with the city of Bath World Heritage team in the role of a consultant."



# MA Arts Management

**AWARDS:**

MA Arts Management  
Postgraduate Diploma (PG Dip)  
Arts Management  
Postgraduate Certificate (PG Cert)  
Arts Management

**LOCATION:**

Newton Park campus

**FEES:**

UK/EU Full-time: £7,395  
International: £14,300

**LENGTH:**

Full-time: 1 year  
Part-time: 2 years

**KEY FEATURES:**

Taught by academic experts, and by experienced arts and cultural sector practitioners who help you develop professional contacts and networks  
Includes work-based experience in arts and cultural organisations  
Understand arts and cultural management in an international context

**APPLICATIONS:**

An online application can be made using the 'Apply Now' button on the course's webpage. For any admissions enquiries please contact:  
T: +44 (0)1225 876180  
E: admissions@bathspa.ac.uk  
www.bathspa.ac.uk/postgrad-apply

**ENQUIRIES:**

For all enquiries please email postgraduate@bathspa.ac.uk  
Course Director: Dr Kristin Doern  
**FIND OUT MORE:**  
www.bathspa.ac.uk/pg-arts-management



This flexible course adapts to the ever changing world of culture and the arts. It will expand your theoretical understanding and professional knowledge of arts and cultural management, through hands-on experience and work-based learning.

We will give you the unique opportunity to engage with an extensive range of regional, national and international arts and cultural organisations. These cover the full range of the creative industries including dance, theatre, music, digital creativity, fine art, fashion and heritage.

You will graduate as a responsive, resilient, flexible and imaginative practitioner, equally comfortable in a variety of settings, adept at working in partnership with a wide range of organisations.

**COURSE STRUCTURE AND CONTENT**

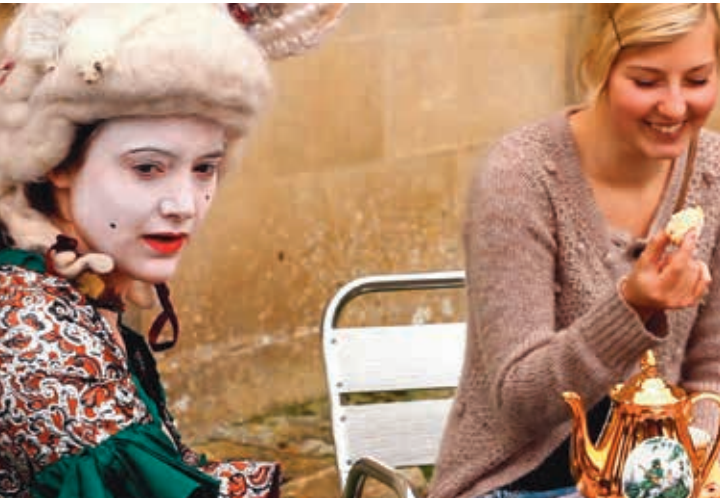
Building on your own experience and background; you will expand your professional arts knowledge, management skills, entrepreneurial thinking, and creative leadership skills.

Delivered in close collaboration with leading arts organisations, we will provide you with the theoretical

framework, appropriate skills and practical experience to meet the challenges of working in your chosen field. At the heart of this course is work-based experience and embedded networking opportunities. You will have opportunities to assess current practice, and to research the wider theoretical and academic contexts of arts and cultural management today.

You will cover theory, critical thinking and skills development as well as gaining practical experience. You will analyse debates about culture and the arts, and apply them to contemporary practice, structures, funding and participation. You will be introduced to people who are dealing with the reality of how these issues play out in arts organisations in practice. You will benefit from being taught by a range of professional practitioners from across the arts and cultural sectors. They deliver lectures and workshops, mentor you on work experience and research projects, and become part of your own developing professional networks.

On the course you combine bespoke Arts Management modules with a choice of Business and Management modules in your own particular areas of interest.



**ASSESSMENT**

On this course you are assessed by a variety of methods that may include some or all of the following: reports on work-based assignments; research project reports; portfolios; reflective learning and work-experience journals; reviews; proposal papers for projects, funding or events, business plans, or strategy documents; project progress reports; project evaluations; and presentations.

**ENTRY REQUIREMENTS**

You will normally have a good first degree (2:1 or above) in any academic subject. You may be considered without a first degree if you can demonstrate considerable relevant experience; you may be asked to attend an interview.

**YOUR FUTURE CAREER**

Culture, the arts and the creative industries are estimated to be worth over £81 billion to the UK economy. Careers in arts management are varied and cover every cultural and artistic area. They include roles in events and venue management; programming events and seasons; marketing; audience development; fundraising; community engagement and social inclusion; education and learning; managing artists and performers.

**STUDENT PROFILE  
KELSEY LYNN FORD  
MA ARTS MANAGEMENT**

"The best thing about the MA in Arts Management was the opportunity to engage in meaningful dialogue with my fellow students and my course leader about my industry. The time you spend pursuing your degree is so precious because even if you take a job in your sector, you'll never again have a specific amount of time carved out of your life strictly dedicated to researching, writing, and discussing the things you are passionate about. You'll never again be surrounded by other students and faculty members who are just as passionate as you. My time at Bath Spa was so valuable because I got to spend an entire year surrounded by likeminded creatives who were not only passionate about the arts and fuelling the creative sectors, but who also knew the "why" behind it and wanted to talk about it all the time with me.

I recommend Bath Spa because it's an incredible place to be inspired and challenged both creatively and academically. During my time at Bath Spa, I have never felt so excited about my industry and so passionate about my career, but I have also never had to think so critically or work so hard academically. The University does an incredible job of developing creative and critical thinkers."

# MA Business and Management

**AWARDS:**

MA Business and Management  
MA Business and Management (Accounting)  
MA Business and Management (Entrepreneurship)  
MA Business and Management (International Business)  
MA Business and Management (Marketing)  
All pathways are available as Postgraduate Diploma (PG Dip) and Postgraduate Certificate (PG Cert).

**LOCATION:**

Newton Park campus

**FEES:**

UK/EU Full-time: £7,195  
International: £13,300  
**LENGTH:**  
MA full-time: 3 trimesters (1 calendar year)  
MA part-time: 32 months  
PG Dip full-time: 2 trimesters  
PG Dip part-time: 4 trimesters

**KEY FEATURES:**

Delivered in a student-centred, teaching-led and research-informed Business School, develop a thorough grounding in current theories and best practice in business and management  
International curriculum, business links and industry networks, professional accreditation, and embedded support for international students  
Choice of pathways – either general business and management, or specific pathways in accounting, entrepreneurship, international business, or marketing

**APPLICATIONS:**

An online application can be made using the 'Apply Now' button on the course's webpage. For any admissions enquiries please contact:  
T: +44 (0)1225 876180  
E: [admissions@bathspa.ac.uk](mailto:admissions@bathspa.ac.uk)  
[www.bathspa.ac.uk/postgrad-apply](http://www.bathspa.ac.uk/postgrad-apply)

**ENQUIRIES:**

For all enquiries please email [postgraduate@bathspa.ac.uk](mailto:postgraduate@bathspa.ac.uk)  
Course Director: Dr Kristin Doern

**FIND OUT MORE:**

[www.bathspa.ac.uk/pg-business-and-management](http://www.bathspa.ac.uk/pg-business-and-management)

Develop your career in business and management as a socially engaged, ethically aware and globally connected professional who is creative, enterprising, resilient, and innovative.

The MA in Business and Management in the Bath Business School provides you with a broad introduction to the fundamental principles of business and management in a rapidly changing, increasingly globalised world. Supported by practice-based interdisciplinary teaching and research, you will develop your business expertise alongside the practical and professional skills needed to effectively manage the challenging issues affecting organisations today.

You also have the option of taking the MA with a 'pathway' route, allowing you to focus on one of four specific areas:

**ACCOUNTING PATHWAY**

The Accounting pathway develops your understanding of how accounting and financial management are crucial across all businesses, and in increasingly interconnected international contexts.

**ENTREPRENEURSHIP PATHWAY**

Engaging with a diverse range of organisations, and considering the rapidly changing environments in which they operate from the local and regional, to the national and international, the Entrepreneurship pathway develops your understanding of how entrepreneurship and creative enterprise are at the heart of moving individual businesses, and management professionals forward in a challenging and increasingly competitive market.

**INTERNATIONAL BUSINESS PATHWAY**

Increasingly, an understanding of international business environments is crucial for organisational decision making and critical to business success. The International Business pathway develops your understanding of the political, legal, economic and

financial systems for business and management in international and multicultural contexts.

**MARKETING PATHWAY**

From individual entrepreneurs and small/medium-sized enterprises, to large organisations and multinational corporations, effective marketing plays a central role in building brand awareness, growing a business, engaging customers and expanding an organisation's impact and reach. The Marketing pathway develops your understanding of why marketing is strategically important for organisations, how it relates to other management processes, and the elements that make up modern integrated marketing communications.

**COURSE STRUCTURE AND CONTENT**

Our courses are designed to offer you choice in tailoring your final degree content to match your academic interest and future career development. You will take a mix of 'core' and 'option' taught modules and complete a major dissertation/consultancy project.

If you choose the consultancy project, you will work with an existing or newly-started business on a specific issue or challenge facing the organisation in the real world. Based on your own investigations and contextualisation, you will provide ideas, information and management advice to the host business, further developing your academic and research skills and giving you invaluable practical and professional experience.

If you select to study on a 'pathway' route, there are pathway-specific 'required' modules, and your final dissertation/consultancy project will be in your chosen pathway area.

Through your course, we use simulated work-based scenarios that require you to operate as if in a real-world work environment across a curriculum enriched by our connections with local, regional, national and international



organisations. They collaborate with us to bring you tasks and assessments formed around live briefs that enable you to develop solutions to existing business problems and issues.

**ASSESSMENT**

You are assessed by a variety of methods that may include reports on work-based assignments; research project reports; portfolios; reflective learning and work-experience journals; reviews; proposal papers for projects, funding or events, business plans, or strategy documents; project progress reports; project evaluations; presentations; essays; exams.

**ENTRY REQUIREMENTS**

You will normally have a good first degree in any academic subject. You may be considered without a first degree if you can demonstrate considerable relevant experience; you may be asked to attend an interview.

**YOUR FUTURE CAREER**

This MA programme is designed to prepare you for a wide range of occupations in general management across all industry sectors and within the contexts of international business environments. It delivers practical skills and techniques applicable to business and management careers in marketing, enterprise and business start-ups, accounting management, and international business. To further support our students' career development, we also have a number of professional recognitions and opportunities for further business and management sector accreditation.





# MBA Leadership

**AWARDS:**

MBA Leadership

**LOCATION:**

Newton Park campus

**FEES:**

UK/EU Part-time: £18,000 (taken part-time over two years)

This course can be funded by the degree apprenticeship levy – please see below

**LENGTH:**

Part-time: normally taken over two years

**KEY FEATURES:**

Develop your existing management experience and secure an internationally-recognised postgraduate management degree

Gain an executive postgraduate qualification studying part-time while in your current role

Can be funded by the Apprenticeship Levy (Senior Leader Degree Apprenticeship)

**APPLICATIONS:**

An online application can be made using the 'Apply Now' button on the course's webpage. For any admissions enquiries please contact:

T: +44 (0)1225 876180

E: [admissions@bathspa.ac.uk](mailto:admissions@bathspa.ac.uk)

[www.bathspa.ac.uk/postgrad-apply](http://www.bathspa.ac.uk/postgrad-apply)

If you are interested in taking the MBA Leadership as a Senior Leader Degree Apprenticeship, funded through the Apprenticeship Levy, please contact our Degree Apprenticeship Manager at [apprenticeships@bathspa.ac.uk](mailto:apprenticeships@bathspa.ac.uk)

**ENQUIRIES:**

For all enquiries please email [postgraduate@bathspa.ac.uk](mailto:postgraduate@bathspa.ac.uk)

Or contact Bath Business School Graduate Course Director Dr. Kristin Doern on [k.doern@bathspa.ac.uk](mailto:k.doern@bathspa.ac.uk)

**FIND OUT MORE:**

[www.bathspa.ac.uk/pg-leadership](http://www.bathspa.ac.uk/pg-leadership)

Our MBA degree in Leadership aligns your professional career development with the strategic needs of your organisation and sector.

Created and delivered through close consultation and collaboration with employers, the MBA Leadership at Bath Spa aims to ensure that you will graduate with the leadership skills that organisations need in an ever-changing business environment.

You will learn to manage complexity, diversity, and change, and develop creative and innovative approaches to the challenges facing teams, organisations, and sectors.

This MBA in Leadership and Management gives you the opportunity to gain Chartered Management Institute (CMI) accreditation, in addition to securing an internationally-recognised postgraduate management degree.

**SENIOR LEADER DEGREE APPRENTICESHIP**

The MBA Leadership can also be funded by the Apprenticeship Levy (Senior Leader Degree Apprenticeship route). Visit [www.bathspa.ac.uk/degree-apprenticeships](http://www.bathspa.ac.uk/degree-apprenticeships) for more information about completing this programme via an apprenticeship.

**COURSE STRUCTURE AND CONTENT**

This course is designed to develop your theoretical and practical expertise in strategic management and leadership.

We engage with current debates on the issues and challenges facing managers and leaders today, critically reflecting on the complexities of social, political, and economic change in local, regional, national and international contexts.

It is delivered part-time over two years. In the first year, you take the majority of your classroom-based modules. In the second year, you concentrate on your major independent Work Based Consultancy Project. The Professional Development

Portfolio module runs across both years of the course, supporting your academic progress and your professional career development.

Modules on the MBA Leadership include:

- Leading, Managing and Developing People
- Strategic Management
- Leading Change and Innovation
- Governance and Risk Management
- Strategic Marketing Management
- Corporate Financial Management
- Project Management
- Professional Development Portfolio
- Work Based Consultancy Project

**ASSESSMENT**

You are assessed by a variety of methods that may include some or all of the following across the various modules on the course:

- Reports
- Case studies
- Business plans
- Proposals for work-based projects/ consultancy project
- Reflective learning, professional career development and work-based experience portfolio
- Project evaluations
- Presentations

**WORK-BASED LEARNING, INDUSTRY LEARNING AND PROFESSIONAL NETWORKS**

This course is designed to increase your professional networks and business connections.

Work-based learning, the development of a professional portfolio, and the work-based consultancy project are underpinned by the taught modules, and supported by a University-based mentor and a work-based mentor.

The Bath Business School MBA is supported by an Industry Advisory Panel with experts and professionals from a range of organisations across different business sectors locally, regionally, and nationally.



**ENTRY REQUIREMENTS**

You will usually have a good undergraduate degree in any academic subject, plus at least two years of work experience after graduation, and currently be employed in a management position.

You may be considered without an undergraduate degree if you can demonstrate considerable relevant experience. You will be asked to attend an interview, or to submit a portfolio supporting your application.

**YOUR FUTURE CAREER**

The MBA Leadership is designed for people who are already employed, working in a management capacity, and supported to take the course as professional career development by their organisation.

You will develop your leadership and management expertise in the context most relevant to your chosen career path, and develop lifelong learning skills, including an enthusiasm for business and learning as part of personal professional development.









# MSc Principles of Applied Neuropsychology

<b>AWARDS:</b> MSc Principles of Applied Neuropsychology  Postgraduate Diploma (PG Dip) Principles of Applied Neuropsychology  Postgraduate Certificate (PG Cert) Principles of Applied Neuropsychology	<b>LENGTH:</b> Full-time: 1 year Part-time: 2 years  <b>KEY FEATURES:</b> Study emerging theories in advanced neuropsychology  Learn practical skills in preparation for a career as a scientist-practitioner  Opportunity to publish an academic paper	<b>APPLICATIONS:</b> An online application can be made using the 'Apply Now' button on the course's webpage. For any admissions enquiries please contact:  T: +44 (0)1225 876180 E: admissions@bathspa.ac.uk www.bathspa.ac.uk/postgrad-apply	<b>ENQUIRIES:</b> For all enquiries please email postgraduate@bathspa.ac.uk  Course Director: Alison Lee  <b>FIND OUT MORE:</b> www.bathspa.ac.uk/pg-principles-of-applied-neuropsychology
<b>LOCATION:</b> Corsham Court campus			
<b>FEES:</b> UK/EU Full-time: £7,395 International: £14,300			



The MSc Principles of Applied Neuropsychology examines the uses of neuropsychology in the clinical world. Neuropsychology is central to the debate about the spark of individuality each human shows. This course looks at brain functions as an individual and in group settings, as well as studying the neuropsychology of mental health problems.

The course is an employability-centred extension to an undergraduate psychology degree. It is focused on neuropsychology, but is suitable for any student interested in preparing for an eventual career as a professional psychologist.

**COURSE STRUCTURE AND CONTENT**  
Issues in Professional Practice introduces students to the principles of applied psychology and the processes of recovery and rehabilitation.  
Social Neuropsychology of Mental Health includes a neuropsychological perspective on mental health problems. This module applies recent neuroscientific findings to neuropsychological treatments and prevention of mental distress disorders.  
Advanced Neuropsychology provides a clinical approach to recent neuroscientific discoveries. Typically we cover autistic spectrum disorders, empathy, self and whatever is current.  
Neuropsychological Rehabilitation offers a broad theoretical perspective of the different methods of rehabilitation available for a range of disorders.  
The Dissertation module is the opportunity to investigate an area of neuropsychology of individual interest.

**ASSESSMENT**  
A variety of assessment that you'll use during your doctoral training; a systematic literature review, writing a case formulation, a reflective diary as well as traditional essays.

**ENTRY REQUIREMENTS**  
You'll have a good major psychology degree. You don't need to have studied modules in undergraduate neuropsychology, but you need to have some knowledge of how the human brain works. In addition, you should usually have completed a psychology dissertation.

**YOUR FUTURE CAREER**  
Current alumni pathways include the successful completion of a Doctorate in Clinical Psychology; NHS Research Assistant; and PhD studentship.

# MA Environmental Humanities

**AWARDS:**  
MA Environmental Humanities

**LOCATION:**  
Newton Park and Corsham Court campuses

**FEES:**  
UK/EU Full-time: £7,195  
International: £13,300

**LENGTH:**  
Full-time: 1 year  
Part-time: 2 years

**KEY FEATURES:**  
This is an innovative interdisciplinary MA led by world-class environmental humanities scholars

We bring arts, humanities and social science into critical conversation with ecology and conservation

You'll develop key skills for environmental scholarship, creativity, communication, and activism

**APPLICATIONS:**  
An online application can be made using the 'Apply Now' button on the course's webpage. For any admissions enquiries please contact:

T: +44 (0)1225 876180  
E: [admissions@bathspa.ac.uk](mailto:admissions@bathspa.ac.uk)  
[www.bathspa.ac.uk/postgrad-apply](http://www.bathspa.ac.uk/postgrad-apply)

**ENQUIRIES:**  
For all enquiries please email [postgraduate@bathspa.ac.uk](mailto:postgraduate@bathspa.ac.uk)

Course Director: Kate Rigby

**FIND OUT MORE:**  
[www.bathspa.ac.uk/pg-environmental-humanities](http://www.bathspa.ac.uk/pg-environmental-humanities)



The MA in Environmental Humanities brings humanities and sciences together to build creative responses to environmental challenges. This is an innovative interdisciplinary MA led by world-class environmental humanities scholars, where we bring arts, humanities and social science into critical conversation with ecology and conservation.

On this pioneering course, you'll acquire new research skills, as well as a more holistic understanding of environmental issues. You'll address specific issues such as climate change and biodiversity loss, alongside broader ideas about human relationships with place, technology and the more-than-human world, drawing insights from across a wide range of disciplines and cultures.

Taught by world-leading specialists, this course offers intensive introductions to new disciplinary perspectives, through critical focus on key concepts such as 'the Anthropocene,' the idea that Earth has now entered a new geological era, indelibly shaped by human activities.

**COURSE STRUCTURE AND CONTENT**

In trimester one, you'll study the core module, Environment Humanities, as well as optional module(s).

In trimester two, you'll study Interdisciplinary Research Methods for Environmental Humanities, Research Methods for Social Science, as well as optional module(s).

Trimester three will focus on your Dissertation or Creative Project.

**ASSESSMENT**

Assessment is primarily based on written assignments, but can also include assessed creative practice where appropriate.

**ENTRY REQUIREMENTS**

The course is potentially suitable for graduates of any discipline. Candidates without a degree but with relevant professional or creative practice experience are also considered.

**YOUR FUTURE CAREER**

Career opportunities for graduates with an MA in Environmental Humanities include working in socio-environmental research and education; local, national and international conservation organisations; environmental film, TV, and other media; environmental journalism, art and creative writing; eco-tourism; private companies with a strong sustainability agenda; and local, national and international governmental agencies concerned with conservation, climate change, and sustainable development.

**STUDENT PROFILE**

**LISA HALL**  
**MA ENVIRONMENTAL HUMANITIES**

"I chose the MA in Environmental Humanities as it's a pioneering course in the UK for this burgeoning field, with leading experts who are very well-connected to similar courses worldwide.

The first module was a real highlight and introduced me to incredible, cutting edge thinking in Philosophy and Anthropology on human relations with the more-than-human world. It was a real eye-opener, to find writers expressing what I had believed for a long time; beliefs I feel are increasingly vital in these environmentally-challenging times. A further highlight was to be offered funding for a conference at Stockholm University which was excellent in introducing me to such a breadth of researchers all working under the environmental humanities umbrella."



# MSc Environmental Management

**AWARDS:**  
MSc Environmental Management  
Postgraduate Diploma (PG Dip)  
Environmental Management  
Postgraduate Certificate (PG Cert)  
Environmental Management

**LOCATION:**  
Newton Park campus

**FEES:**  
UK/EU Full-time: £7,195  
International: £13,300

**LENGTH:**  
Full-time: 1 year  
Part-time: 2 years

**KEY FEATURES:**  
Taught by staff with significant industry experience, complemented by talks and sessions from professional guest speakers

Explore the field from multiple perspectives, with opportunities to collaborate across geography, the sciences, business and the humanities

Course accredited by the Institute of Environmental Management and Assessment (IEMA)

**APPLICATIONS:**  
An online application can be made using the 'Apply Now' button on the course's webpage. For any admissions enquiries please contact:

T: +44 (0)1225 876180  
E: admissions@bathspa.ac.uk  
www.bathspa.ac.uk/postgrad-apply

**ENQUIRIES:**  
For all enquiries please email postgraduate@bathspa.ac.uk  
Course Director: Ian Thornhill

**FIND OUT MORE:**  
www.bathspa.ac.uk/pg-environmental-management



Are you interested in reducing people's impact on the planet? Do you want to learn how to reduce the environmental footprint of a business or organisation?

This Environmental Management course has been specifically developed to address growing environmental and sustainability pressures and create innovative solutions towards a resilient environment and society.

Tailor this environmental sustainability degree to your individual interests and career aspirations. Uniquely, you can incorporate Business and Management modules into the programme. This, coupled with our IEMA (Institute of Environmental Management and Assessment) accreditation, means you'll be ideally placed to work in sustainable business – in addition to a variety of other environmental careers, including sustainability specialist, environmental manager or consultant, and entrepreneur.

**COURSE STRUCTURE AND CONTENT**  
In the first two trimesters, we provide you with core knowledge and skills, in particular environmental systems and management tools, to work as an environmental professional instigating and managing change, data handling, and reporting. You'll study contemporary issues, and benefit from talks from specialists in the environmental industry. Optional modules give you the opportunity to develop a greater depth of knowledge in several of these components, for example energy and waste management, ecosystem services and sustainability principles.

The third trimester is devoted to your independent research project where you'll work with your supervisor on a topic of particular interest to you. This might be a project working with an industry partner and will allow you to demonstrate your environmental understanding in an area relevant to your interests and career.

**ASSESSMENT**  
You'll tackle a range of assessment types, all with a strong emphasis on applying the skills you learn during your course to workplace scenarios. These include writing technical reports, presentations and the use of electronic media, such as developing a website. There are no written examinations.

**ENTRY REQUIREMENTS**  
You may or may not have a relevant first degree, however, a related degree will be an advantage in terms of prior knowledge.

**YOUR FUTURE CAREER**  
Our graduates work in a range of environmental management roles. This course will particularly suit someone wishing to pursue a career in ecological consultancy, flooding control, corporate sustainability, energy efficiency or environmental hazards and pollution control.

**PROFESSIONAL ACCREDITATION**  
This course has been approved by IEMA, the leading professional body for sustainability. As a graduate of this course you'll be automatically eligible to add the professionally recognised GradIEMA suffix to your name, signifying you are part of the next generation of sustainability leaders and enabling you to fast track an application to practitioner with IEMA once you have gained sufficient experience.

**STUDENT PROFILE**  
**ELLIE CUFF**  
**MSc ENVIRONMENTAL MANAGEMENT**

"The varied range of topics drew me to this MSc as my interest and passion in the environment is not focused on one specific area. A highlight was definitely being able to see myself progress and grow into a more conscious, confident and passionate person in regards to the environment. Two months after completing my MSc I began my career as a graduate energy management consultant at a commercial energy efficiency consultancy. I have started my Level 1 training towards Chartership with the Energy Institute, with the intention of becoming a Chartered Energy Manager in the future."

**STUDENT PROFILE**  
**SASHA APONTE**  
**MSc ENVIRONMENTAL MANAGEMENT**

"This MSc helped me to understand concepts such as sustainability, sustainable development and corporate sustainability. These are key concepts for industries that want to retain their social licence, become more environmentally friendly and grow in a sustainable way"



# Visit us

One of the best ways of finding out about Bath Spa University and what it would be like to be a postgraduate student here is to visit us.

- Find out about postgraduate study and the full range of programmes on offer
- Meet the staff and students
- Take a tour of the campuses and the excellent facilities

**How to book**  
You will need to register to attend these events:

[www.bathspa.ac.uk/postgrad-openday](http://www.bathspa.ac.uk/postgrad-openday)

Or for further information email: [opendays@bathspa.ac.uk](mailto:opendays@bathspa.ac.uk)



## POSTGRADUATE OPEN DAYS 2019

March  
16

Saturday  
All campuses

## POSTGRADUATE CAMPUS VISITS

### NEWTON PARK

The University operates an open campus at Newton Park and welcomes visitors Monday to Friday between 09:00h and 17:00h. You can collect an information pack when you arrive which includes a self-guide leaflet of the campus.

### INDIVIDUAL VISIT

For those that are unable to attend one of our postgraduate events but would like to arrange an individual visit to the university. A representative from the course team will be able to advise you on the possibility of meeting the course director for the postgraduate course you are interested in.

### SUBJECT SPECIFIC EVENTS

The University often holds subject specific postgraduate events for those wanting to find out more about the individual master's courses. Details and dates of these events will appear on the website when announced.

## POSTGRADUATE STUDY FAIRS 2018–2019

We exhibit at various Postgraduate study fairs and events, and will be happy to talk to you about the postgraduate courses that we offer.

30

October  
2018

Postgraduate Study Fair (London) at Senate House, University of London

14

November  
2018

Postgraduate Study Fair (Manchester) at Manchester Central Convention Centre

20

November  
2018

Postgraduate Study and Funding Fair (Birmingham) at Aston University

31

January  
2019

Postgraduate Study Fair (London) at Senate House, University of London

28

February  
2019

Postgrad Live! Study Fair (Bristol) at University of Bristol





---

**MORE INFORMATION**

This prospectus is available in large print and Braille format on request.

Published March 2019

The contents of this prospectus are as accurate as possible at the time of going to press (March 2019).

It is intended as a general guide to the courses and facilities available to students commencing a postgraduate programme in September 2019. Please note that although we do not anticipate that there will be major changes to the information provided in this Prospectus, it is prepared a considerable time in advance and the University may make limited changes to courses and their modules to ensure they remain current and up-to-date, to respond to external developments and for a number of practical reasons. Before making an application, please check our website ([www.bathspa.ac.uk](http://www.bathspa.ac.uk)) to ensure you have the most up-to-date information. As a condition of enrolment all students will be required to abide by the policies and regulations of the University. If you accept an offer of a place at Bath Spa University you will receive further information about teaching, assessment and educational services offered by the University. The University's postgraduate terms and conditions can be found at [www.bathspa.ac.uk/terms-and-conditions](http://www.bathspa.ac.uk/terms-and-conditions).

Designed by:  
Mytton Williams  
[www.myttonwilliams.co.uk](http://www.myttonwilliams.co.uk)

Printed by:  
Belmont Press

**ART AND DESIGN**

- 29 MRes Art and Design
- 30 MA Curatorial Practice
- 31 MA Drawing
- 32 MA Design: Ceramics
- 33 MA Design: Fashion and Textiles
- 34 MA Fine Art
- 35 MA Visual Communication

**EDUCATION**

- 37 Professional Doctorate in Education (EdD)
- 38 The National Award for SENCo
- 39 MA Inclusive Education
- 40 MA Education: Leadership and Management
- 41 MA Education: Early Childhood Studies
- 42 MA Counselling and Psychotherapy Practice
- 43 MA Professional Practice
- 44 PG Cert Higher Education
- 45 MA Professional Practice in Higher Education

**WRITING AND ENGLISH**

- 47 MA Creative Writing
- 48 MA Scriptwriting
- 49 MA Travel and Nature Writing
- 50 MA Writing for Young People
- 51 MA Children's Publishing
- 52 MA Crime and Gothic Fictions

**MUSIC**

- 55 MA/MRes Composition
- 56 MA Music Performance
- 57 MA Sound Arts
- 58 MA Sound Design
- 59 MA Sound Production
- 60 MA Songwriting

**FILM AND MEDIA**

- 63 MA Feature Filmmaking

**PERFORMING ARTS AND DANCE**

- 64 MA Classical Acting
- 65 MA Creative Producing
- 66 MA Dance
- 67 MA Directing
- 68 MA Directing Circus
- 69 MA Performing Shakespeare

**COMPUTING**

- 71 MSc Creative Computing

**HERITAGE**

- 72 MA Heritage Management

**BUSINESS AND MANAGEMENT**

- 73 MA Arts Management
- 74 MA Business and Management
- 75 MBA Leadership

**PSYCHOLOGY**

- 77 MSc Principles of Applied Neuropsychology

**ENVIRONMENT**

- 78 MA Environmental Humanities
- 79 MSc Environmental Management

**Newton Park**  
Newton St Loe  
Bath BA2 9BN  
T: +44 (0)1225 875875

**Sion Hill**  
Lansdown  
Bath BA1 5SF  
T: +44 (0)1225 875533

**Corsham Court**  
Corsham  
Chippenham SN13 0BZ  
T: +44 (0)1225 876383

**Locksbrook Road**  
Locksbrook Rd  
Bath BA1 3EL

